



CLEAN WATER GROUP



CONTENTS INDICE

Fittings PVC-U

INHALTSVERZEICHNIS
CONTENTS INDICE

FLEXFIT

PVCu Druckrohre
PVCu Pressure Pipes

Winkel
Elbows

Bogen
Bends

T-Stücke
Tees

Kreuze, Muffen
Crosses, Sockets

Reduktionen kurz
Reducing bushes

Reduktion lang
Reducing sockets

Verschraubungen
Unions

Einlegeteil, Einschraubteil
Union end, Union bush

Überwurfmutter, O-Ringe für Verschraubungen
Union nut, O-Rings for union

Buchbuchsen
Flange adaptors

Losflansche
Backing flanges

Flachdichtungen
Flat gaskets

Kappen
Caps

Übergangsnippel, Übergang Muffennippel
Adaptor nipples spigot, adaptor bushes

Übergangsmuffen
Adaptor nipples

Doppelnippel
Hexagon nipples

Druckschlauchtüllen, Stopfen
Hose nozzles, Plugs

Übergangsstück, Reduziernippel
Female thread adaptor, Reducing bushes

Behälterverschraubungen
Container adaptors

Übergangverschraubungen
Adaptor Unions

Rohrklemmen
Pipe clips

Spezialkleber und Reiniger
Solvent cement and cleaner

FLEXFIT



Übergangverschraubung FlexFit

- Klemm - Klebestutzen

Adaptor union FlexFit

- *compression - Solvent cement spigot*

d	DN	PN	VE Pack	Art.Nr.
50	40	PN4	30	71736
50-1 1/2"	40	PN4	30	76488
63	50	PN4	25	71905
63-2"	50	PN4	25	76338



Übergangverschraubung FlexFit

- Klemm x Klebemuffe

Adaptor union FlexFit

- *compression - Solvent cement socket*

d	DN	PN	VE Pack	Art.Nr.
50	40	PN4	24	71737
50-1 1/2"	40	PN4	24	76489
63	50	PN4	25	71906
63-2"	50	PN4	24	76339



Übergangverschraubung FlexFit BSP

- Klemm - Aussengewinde

Adaptor union FlexFit BSP

- *compression - male thread*

d	DN	PN	VE Pack	Art.Nr.
50-1 1/2"	40	PN4	25	71739
50-2"	40	PN4	24	71904
63-2"	50	PN4	36	71910



Übergangverschraubung FlexFit

- Klemm - Aussengewinde

Adaptor union FlexFit

- *compression - male thread*

d	DN	PN	VE Pack	Art.Nr.
50-1 1/2"	40	PN4	25	76492



Übergangverschraubung FlexFit BSP

- Klemm - Innengewinde

Adaptor union FlexFit BSP

- *compression - Female thread*

d	DN	PN	VE Pack	Art.Nr.
50-1 1/2"	40	PN4	24	71740
63-2"	50	PN4	25	71911

FLEXFIT



Doppelverschraubung FlexFit

- Klemm - Klemm

Double union FlexFit

- *compression - compression*

d	DN	PN	VE Pack	Art.Nr.
50	40	PN4	20	71738
63	50	PN4	20	71907



Übergangswinkel FlexFit 90°

- Klemm x Klebemuffe

Adaptor elbow FlexFit 90°

- *compression - Solvent cement socket*

d	DN	PN	VE Pack	Art.Nr.
50	40	PN4	25	71741
50-1 1/2"	40	PN4	25	76493
63	50	PN4	25	71908
63-2"	50	PN4	25	76340



Übergangswinkel FlexFit 90°

- Klemm - Innengewinde

Adaptor elbow FlexFit 90°

- *compression - Female thread*

d	DN	PN	VE Pack	Art.Nr.
50-1 1/2"	40	PN4	25	76496
63-2"	50	PN4	25	76343



Übergangswinkel FlexFit 90° BSP

- Klemm - Aussengewinde

Adaptor elbow FlexFit 90° BSP

- *compression - male thread*

d	DN	PN	VE Pack	Art.Nr.
50-1 1/2"	40	PN4	25	71903
63-2"	50	PN4	25	76600



Übergangswinkel FlexFit 45°

- Klemm x Klebemuffe

Adaptor elbow FlexFit 45°

- *compression - Solvent cement socket*

d	DN	PN	VE Pack	Art.Nr.
50	40	PN4	25	73506
50-1/2"	40	PN4	25	76644

FLEXFIT



Winkel FlexFit 90°

- Klemm - Klemm

Elbow FlexFit 90°

- *compression - compression*

d	DN	PN	VE Pack	Art.Nr.
50	40	PN4	10	71742
63	50	PN4	10	71909



Übergangs T-Stück FlexFit 90°

- Klemm x Klebemuffe

Adaptor Tee FlexFit 90°

- *compression - Solvent cement socket*

d	DN	PN	VE Pack	Art.Nr.
50	40	PN4	18	71743
50-1 1/2"	40	PN4	18	73402
63	50	PN4	16	71912
63-2"	50	PN4	18	73403



Übergangs T-Stück FlexFit 90°

- Klemm - Klemm

Adaptor Tee FlexFit 90°

- *compression - compression*

d	DN	PN	VE Pack	Art.Nr.
50	40	PN4	8	71744
63	50	PN4	10	71913



Übergangs T-Stück FlexFit 90°

- Klemm - Klemm

Adaptor Tee FlexFit 90°

- *compression - compression*

d	PN	VE Pack	Art.Nr.
50-63-50	PN4	8	76787



Übergangs T-Stück FlexFit 90°

- Klemm x Klebemuffe

Adaptor Tee FlexFit 90°

- *compression - Solvent cement socket*

d	PN	VE Pack	Art.Nr.
50-63-50	PN4	8	76788

FLEXFIT



Schlauch FlexFit

- verstärkt
- Rolle
- EN ISO3994

Hose FlexFit

- reinforced
- coil
- EN ISO3994

d	Farbe Colour	PN	Länge length	Palettenmenge pcs per pallet	Art.Nr.
20 x 16mm	grau grey	PN7	25m	2400	71708
25 x 20mm	grau grey	PN7	25m	1800	71709
32 x 25mm	grau grey	PN7	25m	1100	71710
40 x 34mm	grau grey	PN5	25m	250	71711
50 x 42mm	grau grey	PN5	25m	250	71712
63 x 55mm	grau grey	PN5	25m	200	71713
75 x 65mm	grau grey	PN4	25m	150	73507
90 x 80mm	grau grey	PN4	25m	175	74043



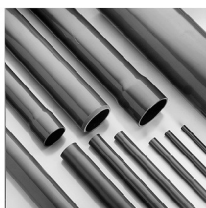
Montageschlüssel FlexFit

Assembly key FlexFit

DN	VE Pack	Art.Nr.
50	10	71634
40	10	71635

PVCu Druckrohre

PVCu Pressure Pipes



Rohr

• mit Muffe

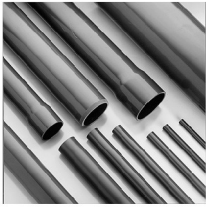
Pipe

• with socket

d	Farbe Colour	Länge length	PN	Palettenmenge pcs per pallet	Art.Nr.
40x1,5mm	grau grey	l=5m	PN6	690	76909
50x1,6mm	grau grey	l=5m	PN6	430	76910
63x2,0mm	grau grey	l=5m	PN6	720	76911
75x2,3mm	grau grey	l=5m	PN6	340	76912
90x2,8mm	grau grey	l=5m	PN6	275	76913
110x2,7mm	grau grey	l=5m	PN6	360	76914
125 x 3,1mm	grau grey	l=5m	PN6	240	76915
140x3,5mm	grau grey	l=5m	PN6	265	76916
160x4,0mm	grau grey	l=5m	PN6	150	76917
180x4,4mm	grau grey	l=5m	PN6	140	76918
200 x 4,9 mm	grau grey	l=5m	PN6	100	76919
225 x 5,5 mm	grau grey	l=5m	PN6	90	76920
250 x 6,2mm	grau grey	l=5m	PN6	60	76921
280 x 6,9 mm	grau grey	l=5m	PN6	55	76922
315 x 7,7 mm	grau grey	l=5m	PN6	45	76923
355 x 8,7 mm	grau grey	l=5m	PN6	5	76924
400 x 9,8mm	grau grey	l=5m	PN6	5	76925

PVCu Druckrohre

PVCu Pressure Pipes



Rohr

- mit Muffe

Pipe

- with socket

d	Farbe Colour	Länge length	PN	Palettenmenge pcs per pallet	Art.Nr.
32x1,6 mm	grau grey	l=5m	PN10	1440	76926
40 x 1,9 mm	grau grey	l=5m	PN10	895	76927
50 x 2,4 mm	grau grey	l=5m	PN10	1130	76928
63 x 3,0mm	grau grey	l=5m	PN10	720	76929
75 x 3,6 mm	grau grey	l=5m	PN10	340	76930
90 x 4,3 mm	grau grey	l=5m	PN10	275	76931
110 x 4,2mm	grau grey	l=5m	PN10	360	76932
125 x 4,8 mm	grau grey	l=5m	PN10	340	76933
140x5,4mm	grau grey	l=5m	PN10	265	76934
160x6,2mm	grau grey	l=5m	PN10	165	76935
180x6,9mm	grau grey	l=5m	PN10	140	76936
200 x 7,7 mm	grau grey	l=5m	PN10	100	76937
225 x 8,6 mm	grau grey	l=5m	PN10	90	76938
250 x 9,6 mm	grau grey	l=5m	PN10	60	76939
280 x 10,7 mm	grau grey	l=5m	PN10	55	76940
315 x 12,1 mm	grau grey	l=5m	PN10	45	76941
355 x 13,6 mm	grau grey	l=5m	PN10	5	76942
400 x 15,3 mm	grau grey	l=5m	PN10	5	76943



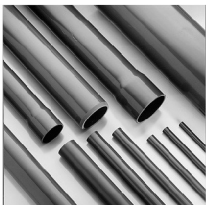
Rohr

- ohne Muffe

Pipe

- without socket

d	Farbe Colour	Länge length	Palettenmenge pcs per pallet	Art.Nr.
50 x 2,4 mm	grau grey	l=2m	500	71575
63 x 3,0mm	grau grey	l=2m	300	73526



Rohr

- mit Muffe

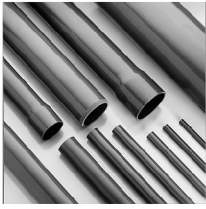
Pipe

- with socket

d	Farbe Colour	Länge length	PN	Palettenmenge pcs per pallet	Art.Nr.
40 x 1,9 mm	grau grey	l=3m	PN10	825	77007
50 x 2,4 mm	grau grey	l=3m	PN10	582	77008
63 x 3,0mm	grau grey	l=3m	PN10	369	77009
75 x 3,6 mm	grau grey	l=3m	PN10	261	77010
90 x 4,3 mm	grau grey	l=3m	PN10	396	77011
110 x 4,2mm	grau grey	l=3m	PN10	258	77012

PVCu Druckrohre

PVCu Pressure Pipes



Rohr

- mit Muffe

Pipe

- with socket

d	Farbe Colour	Länge length	PN	Palettenmenge pcs per pallet	Art.Nr.
20 x 1,5mm	grau grey	l=5m	PN16	4380	76944
25 x 1,9mm	grau grey	l=5m	PN16	2230	76945
32 x 2,4mm	grau grey	l=5m	PN16	1440	76946
40 x 3,0mm	grau grey	l=5m	PN16	895	76947
50 x 3,7mm	grau grey	l=5m	PN16	615	76948
63 x 4,7mm	grau grey	l=5m	PN16	720	76949
75 x 5,6mm	grau grey	l=5m	PN16	340	76950
90 x 6,7mm	grau grey	l=5m	PN16	275	76951
110x6,6mm	grau grey	l=5m	PN16	360	76952
125x7,4mm	grau grey	l=5m	PN16	340	76953
140x8,3mm	grau grey	l=5m	PN16	265	76954
160x9,5mm	grau grey	l=5m	PN16	165	76955
180x10,7mm	grau grey	l=5m	PN16	140	76956
200x11,9mm	grau grey	l=5m	PN16	100	76957
225x13,4mm	grau grey	l=5m	PN16	90	76958
250x14,8mm	grau grey	l=5m	PN16	60	76959
280x16,6mm	grau grey	l=5m	PN16	55	76960
315x18,7mm	grau grey	l=5m	PN16	45	76961



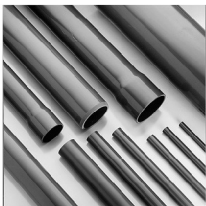
Rohr

- ohne Muffe

Pipe

- without socket

d	Farbe Colour	Länge length	PN	Bundmenge pcs per collar	Art.Nr.
20 x 1,5mm	transparent	l=5m	PN16	25	75828
25 x 1,9mm	transparent	l=5m	PN16	25	73714
32 x 2,4mm	transparent	l=5m	PN16	20	73715
40 x 3,0mm	transparent	l=5m	PN16	20	73716
50 x 3,7mm	transparent	l=5m	PN16	20	73717
63 x 4,7mm	transparent	l=5m	PN16	15	73718
75 x 3,6 mm	transparent	l=5m	PN10	15	76211
90 x 4,3 mm	transparent	l=5m	PN10	10	76212
110 x 5,3 mm	transparent	l=5m	PN10	5	76213



Rohr

- mit Muffe

Pipe

- with socket

d	Farbe Colour	Länge length	PN	Palettenmenge pcs per pallet	Art.Nr.
50 x 2,4 mm	schwarz black	l=5m	PN10	1130	74260

Winkel Elbows



Winkel 90°

- Klebe

Elbow 90°

- slip

d	PN	VE Pack	Art.Nr.
10	PN16	250	70650
12	PN16	150	70651
16	PN16	250	70652
20	PN16	140	70653
25	PN16	100	70654
32	PN16	100	70655
32	PN10	100	70906
40	PN10	50	70905
40	PN16	50	70656
50	PN16	40	70506
50	PN10	40	70904
63	PN16	35	70507
63	PN10	35	70903
75	PN16	30	70659
75	PN10	30	73762
90	PN16	10	70574
90	PN10	10	73763
110	PN16	8	70575
110	PN10	8	73764
125	PN16	6	71398
140	PN16	6	70578
160	PN16	4	70579
200	PN10	2	70664
225	PN10	1	70577
250	PN10	1	71032
280	PN10	1	70576
280	PN6	1	71034
315	PN10	1	71035
315	PN6	1	71036
400	PN6	1	72057



Winkel 90° metrisch/BSP

- Klebemuffe / Innengewinde
- verstärkt

Elbow 90° metric/BSP

- Solvent socket d - Female thread
- reinforced

d	PN	VE Pack	Art.Nr.
16-3/8"	PN16	50	70816
20-1/2"	PN16	140	70817
25-3/4"	PN16	100	70818
32-1"	PN16	100	70819
40-1 1/4"	PN16	50	70820
50-1 1/2"	PN16	40	70821
63-2"	PN16	35	70822
75-2 1/2"	PN16	30	70823
90-3"	PN16	10	70824
110-4"	PN16	8	70825

Winkel Elbows



Winkel 90° BSP

- Klebemuffe / Innengewinde

Elbow 90° BSP

- Solvent socket - Female thread

d	PN	VE Pack	Art.Nr.
10/1/4"	PN10	150	72225
12-1/4"	PN10	150	72226
16-3/8"	PN10	200	71132
20-1/2"	PN10	50	71133
25-3/4"	PN10	30	71134
32-1"	PN10	40	71135
40-1 1/4"	PN10	20	71136
50-1 1/2"	PN10	20	71137
63-2"	PN10	35	71138



Winkel 45°

- Klebe

Elbow 45°

- slip

d	PN	VE Pack	Art.Nr.
10	PN16	150	70666
12	PN16	160	70667
16	PN16	140	70668
20	PN16	180	70669
25	PN16	120	70670
32	PN16	130	70671
40	PN16	80	70672
50	PN16	50	70673
50	PN10	40	70900
63	PN16	45	70674
63	PN10	45	70899
75	PN16	40	70675
90	PN16	20	70676
110	PN16	9	70677
125	PN16	10	71037
140	PN16	7	70678
160	PN16	4	70679
200	PN10	2	70680
225	PN10	1	70580
250	PN10	1	71038
280	PN10	1	71039
280	PN6	1	71040
315	PN10	1	71041
315	PN6	1	71042
400	PN6	1	72058



Winkel 90° BSP

- Klebemuffe / Aussengewinde

Elbow 90° BSP

- Solvent socket - male thread

d	PN	VE Pack	Art.Nr.
32-1 1/4"	PN10	15	71221
40-1 1/4"	PN10	50	71222
50-1 1/4"	PN10	40	71223
50-1 1/2"	PN10	40	70883
50-2"	PN10	40	71224

Winkel Elbows



Winkel 90°

- Klebemuffe/Klebestutzen
- reduziert

Elbow 90°

- Solvent socket/Solvent spigot
- reduced

d	DN	Farbe colour	PN	VE Pack	Art.Nr.
50-40-50	40	grau grey	PN10	40	71317
63-50-63	50	grau grey	PN10	35	71318
50-40-50	40	weiss white	PN10	40	76645
50-40-50	40	schwarz black	PN10	40	74264



Winkel 45°

- Klebemuffe/Klebestutzen
- reduziert

Elbow 45°

- Solvent socket/Solvent spigot
- reduced

d	DN	PN	VE Pack	Art.Nr.
50-40-50	40	PN10	40	71315
63-50-63	50	PN10	40	71316



Reduzierwinkel 90°

- Klebemuffe/ Klebestutzen
- für Whirlpool

Reduction elbow 90°

- solvent socket/ solvent spigot
- for whirlpool

d	Farbe colour	PN	VE Pack	Art.Nr.
20 x 20	weiss white	PN16	100	75853
32 x 32	weiss white	PN16	100	75854

Reduzierwinkel 45°

- Klebemuffe/ Klebestutzen
- für Whirlpool

Reduction elbow 45°

- solvent socket/ solvent spigot

d	Farbe colour	PN	VE Pack	Art.Nr.
20 x 20	weiss white	PN16	10	75998
32 x 32	weiss white	PN16	10	75999

Bogen Bends



Bogen 90°

- Klebe

Bend 90°

- slip

d	r=	PN	VE Pack	Art.Nr.
32	1,8d	PN16	50	71319
40	1,8d	PN16	30	71320
50	1,8d	PN16	80	71321
63	1,5d	PN16	45	71322
75	1,5d	PN16	25	71323
90	1,5d	PN16	5	71324
110	1,5d	PN12,5	4	71325
125	1,5d	PN12,5	1	71326
140	1,5d	PN12,5	2	71327
160	1,5d	PN12,5	1	71328
200	1,5d	PN12,5	1	71329
225	1,5d	PN12,5	1	71330
250	1,5d	PN12,5	1	71331
280	1,5d	PN12,5	1	71332
315	1,5d	PN12,5	1	71333
400	1,5d	PN6	1	71334



Bogen 90°

- Klebe

Bend 90°

- slip

d	r=	PN	VE Pack	Art.Nr.
16	2d	PN16	50	71030
20	2d	PN16	120	70984
25	2d	PN16	100	70985
32	2d	PN16	50	70986
40	2d	PN16	30	70978
50	2d	PN16	60	70979
63	2d	PN16	30	70980
75	2d	PN16	16	70981
90	2d	PN16	5	70982
110	2d	PN16	4	70983
140	2d	PN16	2	71031
160	2d	PN16	1	70987



Bogen 45°

- Klebe

Bend 45°

- slip

d	r=	PN	VE Pack	Art.Nr.
32	1,8d	PN10	30	71335
40	1,8d	PN10	20	71336
50	1,8d	PN10	20	71337
63	1,5d	PN10	10	71338
75	1,5d	PN10	10	71339
90	1,5d	PN10	10	71340
110	1,5d	PN12,5	5	71341
125	1,5d	PN12,5	1	71342
140	1,5d	PN12,5	1	71343
160	1,5d	PN12,5	1	71344
200	1,5d	PN12,5	1	71345
225	1,5d	PN10	1	71346
250	1,5d	PN6	1	71347
280	1,5d	PN6	1	71348
315	1,5d	PN6	1	71349
400	1,5d	PN6	1	71350

T-Stücke

Tees



T-Stück 90°

- Klebe
- egal

Tee 90°

- slip
- equal

d	PN	VE Pack	Art.Nr.
10	PN16	250	70689
12	PN16	250	70690
16	PN16	140	70691
20	PN16	100	70692
25	PN16	70	70693
32	PN16	100	70694
32	PN10	100	70897
40	PN16	50	70695
40	PN10	50	70896
50	PN16	30	70022
50	PN10	30	70895
63	PN16	30	72632
63	PN10	30	75814
75	PN16	25	70696
75	PN10	25	73766
90	PN16	15	70697
90	PN10	15	73767
110	PN16	10	70581
110	PN10	10	73768
125	PN16	6	71043
140	PN16	5	70642
160	PN16	4	70583
200	PN10	2	70700
225	PN10	1	70584
250	PN10	1	71044
280	PN10	1	71045
280	PN6	1	71046
315	PN10	1	71047
315	PN6	1	71048
400	PN6	1	72059

T-Stücke Tees



T-Stück 90°

- Klebe
- reduziert

Tee 90°

- slip
- reduced

d	PN	VE Pack	Art.Nr.
25-20	PN16	70	70702
32-20	PN16	100	70703
32-25	PN16	100	70704
40-20	PN16	50	70705
40-25	PN16	50	70452
40-32	PN16	50	71049
50-20	PN16	60	70706
50-25	PN16	50	70707
50-32	PN16	50	70708
50-40	PN16	50	70709
63-25	PN16	30	70710
63-32	PN16	30	70711
63-40	PN16	30	70712
63-50	PN16	30	70023
75-32	PN16	30	70960
75-40	PN16	30	71050
75-50	PN16	28	71051
90-32	PN16	8	71052
90-50	PN16	8	71053
90-63	PN16	10	70958
90-75	PN16	14	70959
110-32	PN16	9	71054
110-50	PN16	9	70961
110-90	PN16	8	70962



T-Stück 90° BSP

- Klebemuffe / Innengewinde
- verstärkt

Tee 90° BSP

- Solvent socket - Female thread
- reinforced

d	DN	PN	VE Pack	Art.Nr.
16-3/8"	10	PN16	50	70826
20-1/2"	15	PN16	100	70827
25-3/4"	20	PN16	70	70828
32-1"	25	PN16	100	70829
40-1 1/4"	32	PN16	50	70830
50-1 1/2"	40	PN16	30	70831
63-2"	50	PN16	30	70832
75-2 1/2"	65	PN16	18	70833
90-3"	80	PN16	10	70834
110-4"	100	PN16	7	70835



T-Stück 90° metrisch/BSP

- Klebemuffe / Innengewinde

Tee 90° metric/BSP

- Solvent socket - Female thread

d	DN	PN	VE Pack	Art.Nr.
32-1"	25	PN10	10	71139
40-1 1/4"	32	PN10	50	71140
50-1 1/2"	40	PN10	30	71141
63-2"	50	PN10	30	71154

T-Stücke Tees



T-Stück 90° BSP

- Klebemuffe / Aussengewinde

Tee 90° BSP

- Solvent socket - male thread

d	PN	VE Pack	Art.Nr.
32 G=1"	PN10	15	71225
32 G=1 1/4"	PN10	10	71226
40 G=1"	PN10	50	71227
40 G=1 1/4"	PN10	50	71228
50 G=1"	PN16	30	71229
50 G=11/4"	PN10	30	71230
50 G=1 1/2"	PN10	30	71231
63 G=1"	PN10	30	71232
63 G=1 1/4"	PN10	30	71233
63 G=1 1/2"	PN10	30	71234
63 G=2"	PN10	55	71235



T-Stück 45°

- Klebe

Tee 45°

- slip

d	PN	VE Pack	Art.Nr.
10	PN16	150	70006
12	PN16	150	70007
16	PN16	150	70020
20	PN16	60	70713
25	PN16	70	70714
32	PN16	80	70715
40	PN16	80	70716
50	PN16	40	70717
63	PN10	25	70718
75	PN10	15	70719
90	PN10	8	70720
110	PN10	6	70721
125	PN10	3	71055
140	PN10	2	70450
160	PN10	2	70722
200	PN4	1	72060
225	PN4	1	72061
250	PN4	1	72062



T-Stück 90°

- Klebemuffe/Klebestutzen
- Sondertyp für Whirlpools

Tee 90°

- Solvent socket/Solvent spigot
- special typ for whirlpool

d	PN	VE Pack	Art.Nr.
d=32-d1=50-d=32	PN10	100	73863
d=50-d1=50-d=50	PN10	100	73865

Kreuze, Muffen

Crosses, Sockets



Muffe

- Klebe

Socket

- *slip*

d	PN	VE Pack	Art.Nr.
10	PN16	300	70732
12	PN16	250	70733
16	PN16	200	70734
20	PN16	200	70735
25	PN16	200	70736
32	PN16	100	70737
40	PN16	150	70738
50	PN16	60	70739
63	PN16	50	70740
75	PN16	50	70741
90	PN16	30	70742
110	PN16	20	70743
125	PN16	12	71056
140	PN16	8	70744
160	PN16	6	70745
200	PN10	2	70746
225	PN10	2	70747
250	PN10	1	71057
280	PN10	1	71058
315	PN10	1	71060



Kreuz

- Klebe

Cross

- *slip*

d	PN	VE Pack	Art.Nr.
10	PN16	150	70453
12	PN16	150	70454
16	PN16	150	70455
20	PN16	100	70723
25	PN16	50	70724
32	PN16	50	70725
40	PN16	40	70726
50	PN16	40	70727
63	PN16	20	70728
75	PN10	16	70729
90	PN10	5	70730
110	PN10	5	70731

Reduktionen kurz

Reducing bushes



Reduktion kurz metrisch

- Klebestutzen /Klebemuffe

Reducing bush short metric

- Solvent cement spigot /Solvent socket

d	PN	VE Pack	Art.Nr.
16-12	PN16	300	70748
20-16	PN16	300	70749
25-12	PN16	10	71564
25-16	PN16	200	70750
25-20	PN16	200	70751
32-16	PN16	250	70752
32-20	PN16	200	70753
32-25	PN16	200	70754
40-16	PN16	150	70755
40-20	PN16	150	70756
40-25	PN16	150	70757
40-32	PN16	150	70758
50-20	PN16	170	70499
50-25	PN16	170	70498
50-32	PN16	170	70497
50-40	PN16	170	70496
63-25	PN16	140	70503
63-32	PN16	140	70502
63-40	PN16	140	70501
63-50	PN16	140	70500
75-32	PN16	80	70759
75-40	PN16	80	70760
75-50	PN16	80	70761
75-63	PN16	80	70762
90-40	PN16	40	70763
90-50	PN16	40	70764
90-63	PN16	40	70765
90-75	PN16	40	70766
110-50	PN16	30	70767
110-63	PN16	30	70768
110-75	PN16	30	70769
110-90	PN16	30	70770
125-75	PN16	24	72063
125-90	PN16	24	71079
125-100	PN16	24	71080

Reduktionen kurz

Reducing bushes



Reduktion kurz

- Klebestutzen /Klebemuffe

Reducing bush short

- Solvent cement spigot /Solvent socket

d	PN	VE Pack	Art.Nr.
140-75	PN16	15	70771
140-90	PN16	15	70590
140-110	PN16	15	70772
140-125	PN16	15	70451
160-90	PN16	10	70592
160-110	PN16	10	70591
160-125	PN16	2	71957
160-140	PN16	10	70773
200-110	PN10	10	70774
200-125	PN10	10	70775
200-140	PN10	10	70776
200-160	PN10	10	70777
225-110	PN10	3	70778
225-125	PN10	3	72064
225-140	PN10	3	70779
225-160	PN10	3	70780
225-200	PN10	3	70636
250-125	PN10	3	72065
250-140	PN10	3	72066
250-160	PN10	3	71081
250-200	PN10	3	71082
250-225	PN10	3	71083
280-200	PN10	1	71084
280-225	PN10	1	71085
280-250	PN10	1	71086
315-160	PN10	1	72067
315-200	PN10	1	71087
315-225	PN10	1	71088
315-250	PN10	1	71089
315-280	PN10	1	71090
355-315	PN10	1	72086
400-250	PN10	1	72069
400-315	PN10	1	71091
400-355	PN10	1	71092

Reduktionen kurz

Reducing bushes



Reduktion kurz BSP

- Klebestutzen /Innengewinde

Reducing bush short BSP

- Solvent cement spigot / Female thread

d	Type	PN	VE Pack	Art.Nr.
16-1/4"	"B"	PN10	250	71247
20 - 1/4"	"B"	PN10	250	71256
20-3/8"	"B"	PN10	250	71257
25 - 3/8"	"B"	PN10	250	71258
25 - 1/2"	"B"	PN10	250	70970
32 - 1/2"	"B"	PN10	250	71259
32-3/4"	"B"	PN10	250	71260
40 - 1/2"	"B"	PN10	200	71261
40 - 3/4"	"B"	PN10	100	71262
40-1"	"B"	PN10	100	71263
50-1/2"	"B"	PN10	100	71264
50-3/4"	"B"	PN10	100	71265
50-1"	"B"	PN10	100	71266
50-1 1/4"	"B"	PN10	100	71267
50/40 - 1 1/2"	"A"	PN10	100	71268
63 - 1 1/4"	"B"	PN10	100	71269
63-1 1/2"	"B"	PN10	100	71270
63/50 - 2"	"A"	PN10	50	71271
75 - 1 1/4"	"B"	PN10	50	71272
75 - 1 1/2"	"B"	PN10	50	71273
75 - 2"	"B"	PN10	50	71274
75/63 - 2 1/2"	"A"	PN10	25	71275
90/75 - 2"	"B"	PN10	25	71276
90/75 - 3"	"A"	PN10	25	71277
110/90 - 2"	"B"	PN10	25	71278
110/90 - 2 1/2"	"B"	PN10	25	71279
110-3"	"B"	PN10	25	71280
125 - 3"	"B"	PN10	5	71281
125 - 4"	"B"	PN10	5	71282



Reduktion kurz

- Klebe /Innengewinde -

Reducing bush short

- slip /Female thread -

Dimension dimension	VE Pack	Art.Nr.
50-1/2"	100,00	170032
50-3/4"	150,00	170033
63-1/2"	100,00	170030
63-3/4"	100,00	170031
75-1/2"	50,00	190005
75-3/4"	50,00	190008

Reduktion lang

Reducing sockets



Reduktion lang

- K1m/K1s - K1m

Reducing bush long

- Solvent socket/spigot - socket

d	PN	VE Pack	Art.Nr.
D=10, d=08, d1=06	PN16	250	70781
D=12, d=10, d1=08	PN16	250	70782
D=16, d=12, d1=08	PN16	250	70783
D=16, d=12, d1=10	PN16	250	70784
D=20, d=16, d1=10	PN16	100	70785
D=20, d=16, d1=12	PN16	100	70786
D=25, d=20, d1=16	PN16	100	70787
D=25, d=20, d1=20	PN16	100	70789
D=32, d=25, d1=16	PN16	100	70459
D=32, d=25, d1=20	PN16	100	70790
D=32, d=25, d1=25	PN16	100	70791
D=40, d=32, d1=16	PN16	110	70792
D=40, d=32, d1=20	PN16	110	70793
D=40, d=32, d1=25	PN16	110	70794
D=40, d=32, d1=32	PN16	110	70795
D=50, d=40, d1=20	PN16	50	70796
D=50, d=40, d1=25	PN16	50	70458
D=50, d=40, d1=32	PN16	50	70797
D=50, d=40, d1=40	PN16	50	70798
D=63, d=50, d1=25	PN16	50	70799
D=63, d=50, d1=32	PN16	50	70800
D=63, d=50, d1=40	PN16	40	70801
D=63, d=50, d1=50	PN16	50	70802
D=75, d=63, d1=32	PN16	50	70803
D=75, d=63, d1=40	PN16	50	70804
D=75, d=63, d1=50	PN16	50	70805
D=75, d=63, d1=63	PN16	50	70806
D=90, d=75, d1=40	PN16	20	70807
D=90, d=75, d1=50	PN16	20	70808
D=90, d=75, d1=63	PN16	20	70809
D=90, d=75, d1=75	PN16	10	70810
D=110, d=90, d1=50	PN16	30	70811
D=110, d=90, d1=63	PN16	30	70639
D=110, d=90, d1=75	PN16	12	70812
D=125, d=110, d1=63	PN16	5	70813
D=125, d=110, d1=75	PN16	5	70814
D=125, d=110, d1=90	PN16	5	70815
D=140, d=125, d1=75	PN16	5	70640
D=140, d=125, d1=90	PN16	5	70788
D=140, d=125, d1=110	PN16	5	70641

Verschraubungen

Unions



Verschraubung metrisch

- PVCu Klebemuffe

Unión metric

- PVCu Solvent socket ends

d	PN	VE Pack	EPDM
10	PN16	200	72114
12	PN16	200	71116
16	PN16	10	70682
20	PN16	100	70513
25	PN16	100	70683
32	PN16	100	70514
40	PN16	60	70515
50	PN16	32	70684
63	PN16	20	70685
75	PN10	20	70686
90	PN10	20	70687
110	PN10	6	70688



Verschraubung

- PVCu Klebemuffe

Unión

- PVCu Solvent socket ends

d	PN	Norm	VE Pack	EPDM
1/2"	PN16	ISO / ASTM	10	72115
3/4"	PN16	ISO / ASTM	10	72116
3/4"	PN16	ASTM-metrisch ASTM-metric	10	72117
1"	PN16	ISO / ASTM	18	72118
1"	PN16	ASTM-metrisch ASTM-metric	20	72119
1 1/4"	PN16	ISO / ASTM	10	72120
1 1/4"	PN16	ASTM-metrisch ASTM-metric	10	72121
1 1/2"	PN16	ASTM-metrisch ASTM-metric	20	72122
2"	PN16	ASTM-metrisch ASTM-metric	20	72123



Verschraubung BSP

- Klebemuffe / Innengewinde

Unión BSP

- Solvent socket - Female thread

d	VE Pack	EPDM
12-1/4"	10	72601
16-3/8"	20	71214
20-1/2"	60	71215
25-3/4"	90	71216
32-1"	100	71217
40-1 1/4"	60	71218
50-1 1/2"	32	71219
63-2"	20	71220



Verschraubung type „A“ metrisch/BSP

- Klebemuffe / Aussengewinde

Unión type „A“ metric/BSP

- Solvent socket - male thread

d	PN	VE Pack	EPDM
12-1/4"	PN10	50	72169
16-3/8"	PN10	50	71240
20-1/2"	PN10	100	71241
25-3/4"	PN10	50	71242
32-1"	PN10	80	71243
40-1 1/4"	PN10	50	71244
50-1 1/2"		40	71245
63-2"		20	71246

Verschraubungen

Unions



Verschraubung

- Klebemuffe/Klebestutzen

Unión

- Solvent socket/Solvent spigot

d	DN	PN	VE Pack	Art.Nr.
50-40	40	PN16	90	71313
63-50	50	PN16	90	71314



Übergangverschraubung metrisch/BSP

- Klebemuffe / Aussengewinde

Adaptor union metric/BSP

- Solvent socket - male thread

d	DN	PN	VE Pack	Art.Nr.
50-1 1/2"	40	PN10	60	71973
50-2"	40	PN10	40	71975
63-2"	50	PN10	35	71977
50-1 1/2"	40	PN10	60	71974
50-2"	40	PN10	40	71976

Einlegeteil, Einschraubteil

Unión end, Unión bush



Einlegeteil für Verschraubung metrisch

- Klebe

Unión End for unions metric

- slip

d	PN	VE Pack	Art.Nr.
16	PN16	50	71142
20	PN16	280	70560
25	PN16	200	70561
32	PN16	300	70562
40	PN16	250	70563
50	PN16	250	70564
63	PN16	100	70565
75	PN10	50	71117
90	PN10	5	71118
110	PN10	5	71119



Einschraubteil für Verschraubung

- Klebe

Unión bush for unions

- slip

d	PN	VE Pack	Art.Nr.
16	PN16	50	71120
20	PN16	100	71121
25	PN16	100	71122
32	PN16	100	70991
40	PN16	100	71123
50	PN16	100	71124
63	PN16	100	71125
75	PN10	50	71126
90	PN10	10	71127
110	PN10	10	71128

Überwurfmutter, O-Ringe für Verschraubungen

Unión nut, O-Rings for union



Überwurfmutter für Verschraubung

Unión nut for unions

d	PN	VE Pack	Art.Nr.
3/4"	PN16	100	70462
1"	PN16	150	70566
1 1/4"	PN16	100	70567
1 1/2"	PN16	120	70568
2"	PN16	75	70569
d2 1/4"	PN16	60	70570
d2 3/4"	PN16	50	70571
d3 1/2"	PN10	10	71129
4"	PN10	6	71130
5"	PN10	2	71131



O-Ring

O-ring

d	Material material	VE Pack	Art.Nr.
20,84 x 2,62 mm	EPDM 60 shore	100	71428
20,22 x 3,53 mm	EPDM 60 shore	100	50484
28,17 x 3,53 mm	EPDM 60 shore	100	71429
40,06 x 3,53 mm	EPDM 60 shore	100	71430
40,65 x 5,33 mm	EPDM 60 shore	100	50487
47 x 5,33 mm	EPDM 60 shore	100	50216
59,69 x 5,33 mm	EPDM 60 shore	100	50272
86,23 x 5,33 mm	EPDM 60 shore	50	71431
98,93 x 5,33 mm	EPDM 60 shore	50	71432
124,33 x 5,33 mm	EPDM 60 shore	50	71433

Buchbuchsen

Flange adaptors



Bundbuchse gerillt

- Klebe

Flange adaptor grooved face

- slip

d	PN	VE Pack	Art.Nr.
63	PN16	60	71098
75	PN16	60	70148
90	PN16	50	71099
110	PN16	30	71100
125	PN16	10	70633
140	PN16	15	71101
160	PN16	12	71102
200	PN10	5	70637
225	PN10	4	71103



Bundbuchse flach

- Klebe

Flange adaptor flat face

- slip

d	PN	VE Pack	Art.Nr.
16	PN16	100	70150
20	PN16	100	70151
25	PN16	80	70152
32	PN16	100	70153
40	PN16	100	70154
50	PN16	150	70155
63	PN16	100	70137
75	PN16	40	70156
90	PN16	50	70157
110	PN16	25	70172
140	PN16	16	70173
160	PN16	10	70174
225	PN10	6	70175
250	PN10	2	71399
280	PN10	2	70176
315	PN10	1	70177
355	PN10	1	71104
400	PN6	1	71105
450	PN4	1	71106
500	PN4	1	70505

Losflansche

Backing flanges



Blindflansch DIN/ISO

Blind flange DIN/ISO

d	DN	Material material	Farbe Colour	PN	VE Pack	Art.Nr.
16	10	PVC	grau grey	PN10	10	73850
20	15	PVC	grau grey	PN10	10	73851
25	20	PVC	grau grey	PN10	10	73852
32	25	PVC	grau grey	PN10	10	73853
40	32	PVC	grau grey	PN10	5	73854
50	40	PVC	grau grey	PN10	5	73855
63	50	PVC	grau grey	PN10	5	73856
75	65	PVC	grau grey	PN10	5	73857
90	80	PVC	grau grey	PN10	5	73858
110	100	PVC	grau grey	PN10	2	73859
125	110	PVC	grau grey	PN10	2	73860
140	125	PVC	grau grey	PN10	2	73861
160	150	PVC	grau grey	PN10	2	73862
200	175	PVC	grau grey	PN10	1	71093
225	200	PVC	grau grey	PN10	1	71094
250	250	PVC	grau grey	PN10	1	71095
280	250	PVC	grau grey	PN10	1	71096
315	300	PVC	grau grey	PN10	1	71097
355	315	PVC	grau grey	PN10	1	72070
400	370	PVC	grau grey	PN10	1	72071

Losflansche

Backing flanges



Flansch DIN		Flange DIN					
d	DN	Material material	Farbe Colour	PN	VE Pack	Art.Nr.	
16	10	PVC	grau grey	PN10	50	70139	
20	15	PVC	grau grey	PN10	50	70140	
25	20	PVC	grau grey	PN10	40	70141	
32	25	PVC	grau grey	PN10	45	70142	
40	32	PVC	grau grey	PN10	30	70143	
50	40	PVC	grau grey	PN10	30	70144	
63	50	PVC	grau grey	PN10	30	70136	
75	65	PVC	grau grey	PN10	25	70145	
90	80	PVC	grau grey	PN10	20	70146	
110	100	PVC	grau grey	PN10	20	70166	
125	110	PVC	grau grey	PN10	15	70634	
140	125	PVC	grau grey	PN10	23	70167	
160	150	PVC	grau grey	PN10	14	70168	
200	200	PVC	grau grey	PN10	15	70638	
225	200	PVC	grau grey	PN10	8	70169	
250	250	PVC	grau grey	PN10	10	71108	
280	250	PVC	grau grey	PN10	1	70170	
315	300	PVC	grau grey	PN10	1	70171	
355	350	PVC	grau grey	PN10	1	71109	
400	400	PVC	grau grey	PN10	1	71110	
450		PVC	grau grey	PN4	1	71111	
500		PVC	grau grey	PN4	1	70611	

Losflansche

Backing flanges

Flansch DIN

Flange DIN

d	DN	Material material	Farbe Colour	PN	VE Pack	Art.Nr.
25	20	PA-GFK PA-RF	schwarz black	PN16	5	70547
32	25	PA-GFK PA-RF	schwarz black	PN16	5	70548
40	32	PA-GFK PA-RF	schwarz black	PN16	5	70549
50	40	PA-GFK PA-RF	schwarz black	PN16	5	70550
63	50	PA-GFK PA-RF	schwarz black	PN16	5	70551
75	65	PA-GFK PA-RF	schwarz black	PN16	5	70552
90	80	PA-GFK PA-RF	schwarz black	PN16	5	70553
110	100	PA-GFK PA-RF	schwarz black	PN16	5	70554
125	110	GFK GRP	schwarz black	PN16	1	70555
140	125	PA-GFK PA-RF	schwarz black	PN16	1	70556
160	150	PA-GFK PA-RF	schwarz black	PN16	14	70557
200	175	PA-GFK PA-RF	schwarz black	PN10	1	70558
225	200	PA-GFK PA-RF	schwarz black	PN10	1	70559



Flansch

Flange

d	DN	Material material	PN	VE Pack	Art.Nr.
20	15	Aluminium beschichtet	PN16	1	72072
25	20	Aluminium beschichtet	PN16	1	72073
32	25	Aluminium beschichtet	PN16	1	72074
40	32	Aluminium beschichtet	PN16	1	72075
50	40	Aluminium beschichtet	PN16	1	72076
63	50	Aluminium beschichtet	PN16	1	72077
75	65	Aluminium beschichtet	PN16	1	72078
90	80	Aluminium beschichtet	PN16	1	72079
110	100	Aluminium beschichtet	PN16	1	72080
125	110	Aluminium beschichtet	PN16	1	72081
140	125	Aluminium beschichtet	PN16	1	72082
160	150	Aluminium beschichtet	PN16	1	72083
200	175	Aluminium beschichtet	PN16	1	72084
225	200	Aluminium beschichtet	PN10	1	72085
250	250	Aluminium beschichtet	PN10	1	72087
280	250	Aluminium beschichtet	PN10	1	72088
315	300	Aluminium beschichtet	PN10	1	72089
355	315	Aluminium beschichtet	PN10	1	72090
400	370	Aluminium beschichtet	PN6	1	72091

Flachdichtungen

Flat gaskets



Flachdichtung für Bundbuchse

Flat gasket for Flange adaptors

d	DN	VE Pack	EPDM
16	10	10	70158
20	15	50	70159
25	20	50	70160
32	25	50	70161
40	32	50	70162
50	40	50	70163
63	50	50	70138
75	65	20	70164
90	80	20	70165
110	100	20	70178
125	110	10	70635
140	125	10	70179
160	150	25	70180
200	175	10	70643
225	200	10	70181
250	250	1	71112
280	250	1	70182
315	300	1	70183
355	310	1	71113
400	370	1	71114
450	400	1	71115
500		1	70612



Flachdichtung für Bundbuchse
• mit Befestigungslöcher

Flat gasket for Flange adaptors
• with fixing holes

d	DN	VE Pack	EPDM
63	50	10	72068
75	65	10	70267
90	80	10	70268
110	100	10	70269
125	110	10	70270
140	125	10	70271
160	150	10	70272
200	175	1	70273
225	200	1	70274
250	250	1	72110
280	250	1	72111
315	300	1	72112
400	370	1	72113

Kappen Caps



Kappe

- Klebe

Cap

- slip

d	PN	VE Pack	Art.Nr.
12	PN16	200	70860
16	PN16	200	70861
20	PN16	200	70862
25	PN16	200	70863
32	PN16	180	70864
40	PN16	150	70865
50	PN16	150	70866
63	PN16	80	70867
75	PN16	100	70868
90	PN16	80	70869
110	PN16	50	70870
125	PN16	15	71400
140	PN16	15	70871
160	PN16	8	70872
200	PN10	5	71392
225	PN6	1	71393
250	PN6	1	71394
280	PN6	1	71395
315	PN4	1	71396
400	PN4	1	71397



Kappe BSP

- Innengewinde

Cap BSP

- Female thread

d	PN	VE Pack	Art.Nr.
1/8"	PN10	100	72163
1/4"	PN10	100	72164
3/8"	PN10	100	71204
1/2"	PN10	200	70967
3/4"	PN10	150	70463
1"	PN10	90	71205
1 1/4"	PN10	80	71206
1 1/2"	PN10	50	71207
2"	PN10	25	71208

Übergangsnippel, Übergang Muffennippel

Adaptor nipples spigot, adaptor bushes



Übergangsnippel BSP

- Klebemuffe / Aussengewinde

Adaptor bush BSP

- Solvent socket - male thread

d	PN	VE Pack	Art.Nr.
d=12/d1=16-R=1/4"	PN16	300	72187
d=12/d1=16-G=3/8"	PN16	100	71290
d=16 G=3/8"	PN16	100	70853
d=16/d1=20.G=3/8"	PN16	200	71291
d=16/d1=20.G=1/2"	PN16	180	71292
d20 R=1/2"	PN16	150	70854
d=20/d1=25.G=1/2"	PN16	150	70963
d=25/d1=32.R=3/4"	PN16	250	70964
d=25/d1=32.R=1"	PN16	230	70856
d=32/d1=40.G=1"	PN16	250	70582
d=32/d1=40.R=1 1/4"	PN16	200	71293
d=40/d1=50.R=1 1/4"	PN16	120	70857
d=40/d1=50.G=1 1/2"	PN16	120	71294
d50 G=1 1/4"	PN16	100	71295
d50 G=1 1/2"	PN16	120	70508
d50 G=2"		50	71296
d=50/d1=63.R=1 1/2"	PN16	120	71297
d=50/d1=63.G=2"	PN16	50	71298
d=63/d1=75.G=1 1/4"	PN16	100	71299
d=63/d1=75.G=1 1/2"	PN16	90	71300
d63/75 G=2"	PN16	100	71301
d1=63/d2=75.R=2 1/2"	PN16	100	71302
d63/75 G=2"	PN16	90	70509
d=75/d1=90.G=2"	PN16	48	71303
d75/90 G=2 1/2"	PN16	24	71304
d1=75/d2=90.R=3"	PN16	45	71305
d=90/d1=110.G=2 1/2"	PN16	27	71306
d90/110 G= 3"	PN16	21	71307
d=90/d1=110.G=4"	PN16	5	71308
d110 G=3"	PN16	5	71309
d110 G=4"	PN16	5	71310



Übergangsnippel NPT

- Klebemuffe / Aussengewinde

Adaptor bush NPT

- Solvent socket - male thread

d	PN	VE Pack	Art.Nr.
50-1 1/2"	PN16	170	71311
63-2"	PN16	50	71289

Übergangsnippel, Übergangs Muffennippel

Adaptor nipples spigot, adaptor bushes



Übergangsnippel BSP

- Klebestutzen /Aussengewinde

Adaptor nipples BSP

- *Solvent cement spigot / male thread*

d	VE Pack	Art.Nr.
16-3/8"	200	70846
20-R=1/2"	180	70847
25-R=3/4"	100	70848
32-G=3/4"	100	71283
32-R=1"	150	70849
40-1"	100	71284
40-1 1/4"	100	70850
50-G=1 1/4"	80	71285
50-R=1 1/2"	90	70851
63 - 1 1/4"	35	71286
63-R=1 1/2"	50	71287
63-2"	45	70852

Übergangsmuffen

Adaptor nipples



Übergangsmuffe BSP

- Klebemuffe / Aussengewinde

Adaptor socket BSP

- Solvent socket - male thread

d	PN	VE Pack	Art.Nr.
75 - 1 1/2"	PN16	10	71376
75 - 2"	PN10	10	71377
75-2 1/2"	PN10	10	71378
90 - 2"	PN10	10	71379
90 - 2 1/2"	PN10	10	71380
90-3"	PN10	10	71381
110-3"	PN10	6	71382
160 - 6"	PN10	8	71389



Übergangsmuffe metrisch/BSP

- Klebemuffe / Innengewinde
- verstärkt

Adaptor socket metric/BSP

- Solvent socket - Female thread
- reinforced

d	PN	VE Pack	Art.Nr.
16-3/8"	PN16	100	70836
20-1/2"	PN16	150	70837
25-3/4"	PN16	140	70838
32-1"	PN16	150	70839
40-1 1/4"	PN16	120	70840
50-1 1/2"	PN16	110	70841
63-2"	PN16	120	70842
75-2 1/2"	PN16	40	70843
90-3"	PN16	24	70844
110-4"	PN16	15	70845



Übergangsmuffe BSP

- Klebemuffe / Innengewinde

Adaptor socket BSP

- Solvent socket - Female thread

d	PN	VE Pack	Art.Nr.
10/1/4"	PN10	150	72185
12-1/4"	PN10	100	72186
32-1"	PN10	60	71236
40-1 1/4"	PN10	50	71237
50-1 1/2"	PN10	100	71238
63-2"	PN10	90	71239

Doppelnippel

Hexagon nipples



Doppelnippel BSP

- Aussengewinde

Hexagon nipple BSP

- male thread ends

d	PN	VE Pack	Art.Nr.
1/4"	PN10	100	72162
3/8"	PN10	100	71193
1/2"	PN10	100	70966
3/4"	PN10	100	70930
1"	PN10	100	71194
1 1/4"	PN10	100	71195
1 1/2"	PN10	100	71196
2"	PN10	100	71197



Doppelnippel BSP

- Aussengewinde

Hexagon nipple BSP

- male thread ends

d	PN	VE Pack	Art.Nr.
3/8" - 1/4"	PN10	50	71198
1/2" - 3/8"	PN10	50	71199
3/4" - 1/2"	PN10	50	70965
1" - 3/4"	PN10	50	71200
1 1/4" - 1"	PN10	25	71201
1 1/2" - 1 1/4"	PN10	25	71202
2" - 1 1/2"	PN10	25	71203

Druckschlauchtüllen, Stopfen

Hose nozzles, Plugs



Druckschlauchtülle BSP

- Schlauchtülle / Außengewinde

Hose nozzle BSP

- Hose nozzle / Male thread

d	DN	PN	VE Pack	Art.Nr.
d=14.d1=12/G=1/4"	8	PN10	100	71146
d=18.d1=16/G=3/8"	12	PN10	100	71147
d=22.d1=20/G=1/2"	15	PN10	100	71148
d=28.d1=25/G=3/4"	20	PN10	10	70931
d=34.d1=31/G=1"	25	PN10	100	71150
d=43.d1=40/G=1 1/4"	32	PN10	100	71151
d=53.d1=50/G=1 1/2"	40	PN10	100	71152
d=66.d1=60/G=2"	50	PN10	50	71153



Druckschlauchtülle

- Kls / Schlauchtülle

Hose nozzle

- Solvent cement spigot/hose nozzle

d	PN	VE Pack	Art.Nr.
10-8	PN16	100	71062
12-12	PN16	200	71063
16-16	PN16	200	70971
20-20	PN16	180	70972
25-25	PN16	140	70973
32-30	PN16	120	70974
40-40	PN16	120	70975
50-50	PN16	70	70976
63-60	PN16	50	70977



Stopfen BSP

- kegliges Aussengewinde

Plug BSP

- tapered male thread

d	PN	VE Pack	Art.Nr.
12-1/4"	PN10	100	72600
16-3/8"	PN10	100	71209
1/2"	PN10	100	70465
3/4"	PN10	100	70464
1"	PN10	100	71210
1 1/4"	PN10	100	71211
1 1/2"	PN10	100	71212
2"	PN10	100	71213
2 1/2"	PN10	10	72165
3"	PN10	10	72166
4"	PN10	10	72167

Übergangsstück, Reduziernippel

Female thread adaptor, Reducing bushes



Übergangsstück BSP

- Klebemuffe/Klebestutzen- IG
- verstärkt

Female thread adaptor BSP

- Solvent socket/spigot - Female thread
- reinforced

d	PN	VE Pack	Art.Nr.
d=12/d1=16 - 3/8"	PN16	50	71250
d=16/d1=20 - 1/2"	PN16	100	71251
d=20/d1=25 - 3/4"	PN16	100	71252
d=25/d1=32 - 1"	PN16	50	71253
d=32/d1=40 - 1 1/4"	PN16	40	71254
d=40/d1=50 - 1 1/2"	PN16	30	71255
d=50/d1=63 - 2"	PN16	15	70035



Reduziernippel

- Klebestutzen D/Innengewinde
- verstärkt

Reducing bush

- Solvent cement spigot / Female thread
- reinforced

d	PN	VE Pack	Art.Nr.
20-3/8"	PN16	200	71143
25 - 1/2"	PN16	130	70886
32-3/4"	PN16	150	70885
40-1"	PN16	100	70884
50-1 1/4"	PN16	50	71144
63-1 1/2"	PN16	40	71145

Behälterverschraubungen

Container adaptors



Behälterverschraubung

- Innengewinde/Aussengewinde

Container adaptor

- Female thread/Male thread

d	Dichtung Sealing	VE Pack	Art.Nr.
16-3/8"	csn	50	71155
16-3/8"	FPM	10	71160
20-1/2"	csn	50	71156
20-1/2"	FPM	10	71161
20-3/4"	csn	45	71157
20-3/4"	FPM	10	71162
25 - 1"	csn	45	70920
25 - 1"	FPM	10	71163
40-11/2"	csn	45	71158
40-11/2"	FPM	10	71164
63-2"	csn	45	71159
63-2"	FPM	5	71165



Behälterverschraubung BSP

- Klebemuffe/Klebestutzen - AG

Container adaptor BSP

- Solvent socket/spigot - male thread

d	Farbe Colour	VE Pack	Art.Nr.
d1=20/d2=25-G=3/4"	grau grey	50	73413
d=25/d1=32-G=1"	grau grey	50	73414
d=32/d1=40-G=1 1/4"	grau grey	50	73415
d1=40/d2=50-G=1 3/4"	grau grey	50	73416
d=50/d=63-G=2"	grau grey	45	73417
d1=50/d2=63-G=2 1/4"	grau grey	45	73418
d1=63/d2=75-G=2 1/2"	grau grey	24	73419
d1=75/d2=90-G=3"	grau grey	21	73420
d1=90/d2=110-G=M113	grau grey	10	73421
d=110/125 G=M133	grau grey	10	73422



Behälterverschraubung

- Klebemuffe d/AG - AG

Container adaptor

- Solvent socket / male thread -male thread

Dimension dimension	VE Pack	Art.Nr.
20 / 3/4" - 3/4"	10	73404
25 / 1" - 1"	10	73405
32 / 1 1/4" - 1 1/4"	10	73406
40 / 1 3/4" - 1 1/2"	10	73407
50 / 2 1/4" - 2"	10	73409
63 / 2 1/2" - 2 1/2"	10	73410
75 / 3" - 3"	10	73411
90 / M113 - 4"	10	73412

Übergangsverschraubungen

Adaptor Unions



Übergangverschraubung metrisch/BSP

- Klebemuffe / Innengewinde

Adaptor union metric/BSP

- Solvent socket - Female thread

d	Material material	PN	VE Pack	Art.Nr.
20-1/2"	PVC/GTW verzinkt PVC/malleable zinc plated	PN16	40	71167
25-3/4"	PVC/GTW verzinkt PVC/malleable zinc plated	PN16	10	71168
32-1"	PVC/GTW verzinkt PVC/malleable zinc plated	PN16	10	71169
40-1 1/4"	PVC/GTW verzinkt PVC/malleable zinc plated	PN16	10	71170
50-1 1/2"	PVC/GTW verzinkt PVC/malleable zinc plated	PN16	10	71171
63-2"	PVC/GTW verzinkt PVC/malleable zinc plated	PN16	10	71172



Übergangverschraubung metrisch/BSP

- Klebemuffe / Aussengewinde

Adaptor union metric/BSP

- Solvent socket - male thread

d	Material material	PN	VE Pack	Art.Nr.
20-1/2"	PVC/GTW verzinkt PVC/malleable zinc plated	PN16	100.00	71174
25-3/4"	PVC/GTW verzinkt PVC/malleable zinc plated	PN16	100.00	71175
32-1"	PVC/GTW verzinkt PVC/malleable zinc plated	PN16	100.00	71176
40-1 1/4"	PVC/GTW verzinkt PVC/malleable zinc plated	PN16	100.00	71177
50-1 1/2"	PVC/GTW verzinkt PVC/malleable zinc plated	PN16	100.00	71178
63-2"	PVC/GTW verzinkt PVC/malleable zinc plated	PN16	100.00	71179



Übergangverschraubung metrisch/BSP

- Klebemuffe / Innengewinde

Adaptor union metric/BSP

- Solvent socket - Female thread

d	Material material	PN	VE Pack	Art.Nr.
16-3/8"	PVC/Messing PVC/Brass	PN16	40	71180
20-1/2"	PVC/Messing PVC/Brass	PN16	40	71181
25-3/4"	PVC/Messing PVC/Brass	PN16	25	71182
32-1"	PVC/Messing PVC/Brass	PN16	18	71183
40-1 1/4"	PVC/Messing PVC/Brass	PN16	10	71184
50-1 1/2"	PVC/Messing PVC/Brass	PN16	18	71185
63-2"	PVC/Messing PVC/Brass	PN16	12	71186



Übergangverschraubung metrisch/BSP

- Klebemuffe / Aussengewinde

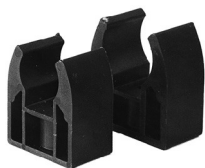
Adaptor union metric/BSP

- Solvent socket - male thread

d	Material material	PN	VE Pack	Art.Nr.
16-3/8"	PVC/Messing PVC/Brass	PN16	10	71187
20-1/2"	PVC/Messing PVC/Brass	PN16	40	71188
25-3/4"	PVC/Messing PVC/Brass	PN16	25	71189
32-1"	PVC/Messing PVC/Brass	PN16	10	71190
40-1 1/4"	PVC/Messing PVC/Brass	PN16	10	71191
50-1 1/2"	PVC/Messing PVC/Brass	PN16	10	70990
63-2"	PVC/Messing PVC/Brass	PN16	10	71192

Rohrklemmen

Pipe clips



Rohrklemme type „A“

Pipe clip type „A“

d	Material material	VE Pack	Art.Nr.
10	PP	800	70238
12	PP	800	70239
16	PP	500	71065
20	PP	400	71066
25	PP	300	71067
32	PP	200	71068



Rohrklemme type „B“

Pipe clip type „B“

d	Material material	VE Pack	Art.Nr.
d16-19mm	PP	300	150149
d20-23mm	PP	500	150271
d25-28mm	PP	500	150272
d31-35mm	PP	500	150240
d39-43mm	PP	500	150293
d47-51mm	PP	500	150238
d60-65mm	PP	300	150239
d72-80mm	PP	10	170180
d87-95mm	PP	150	150292



Rohrklemme type „C“

Pipe clip type „C“

d	Material material	VE Pack	Art.Nr.
25	PP	250	71069
32	PP	150	71070
40	PP	250	71071
50	PP	100	71072
63	PP	80	71073
75	PP	60	71074
90	PP	30	71075
110	PP	80	70184
125	PP	60	70185
140	PP	30	70186
160	PP	30	70187
200	PP	20	70188
225	PP	15	70189



Rohrklemme „D“

Pipe clip „D“

d	Material material	VE Pack	Art.Nr.
90	PP	60	72170
110	PP	40	72171
125	PP	40	72172
140	PP	40	72173
160	PP	20	72174
200	PP	10	72175
225	PP	10	72176
250	PP	10	71076
280	PP	2	71077
315	PP	10	71078
355	PP	10	72177
400	PP	10	72178

2-Wege Kugelhahn mit elektrischem Stellantrieb

2-Ways ball valve with electric actuator



Kugelhahn S4 2W PVC grau PVC-U Klebemuffe metrisch PN10 EPDM ptfe EO510
MVO 12-230 VAC/DC
Ball Valve S4 2W PVC grey PVC-U solvent socket ends metric PN10 EPDM ptfe EO510
MVO 12-230 VAC/DC

Art.Nr. Ref.No	DN	d	VE Pack
125549	10	16	1,00
125550	15	20	1,00



Kugelhahn S6 2W PVC grau PVC-U Klebemuffe metrisch PN3 EPDM ptfe EO510
MVO 12-230 VAC/DC
Ball Valve S6 2W PVC grey PVC-U solvent socket ends metric PN3 EPDM ptfe EO510
MVO 12-230 VAC/DC

Art.Nr. Ref.No	DN	d	VE Pack
126549	32	40	1,00
126550	40	50	1,00
126551	50	63	1,00



Kugelhahn S4 2W PVC grau PVC-U Klebemuffe metrisch PN10 EPDM ptfe EO510
ECO 230VAC
Ball Valve S4 2W PVC grey PVC-U solvent socket ends metric PN10 EPDM ptfe EO510
ECO 230VAC

Art.Nr. Ref.No	DN	d	VE Pack
126539	10	16	1,00
126540	15	20	1,00
126541	20	25	1,00
126542	25	32	1,00



Kugelhahn S6 2W PVC grau PVC-U Klebemuffe metrisch PN3 EPDM ptfe EO510 ECO
230VAC
Ball Valve S6 2W PVC grey PVC-U solvent socket ends metric PN3 EPDM ptfe EO510
ECO 230VAC

Art.Nr. Ref.No	DN	d	VE Pack
126546	32	40	1,00
126547	40	50	1,00
126548	50	63	1,00

2-Wege Kugelhahn mit elektrischem Stellantrieb

2-Ways ball valve with electric actuator



Kugelhahn S4 2W PVC grau PVC-U Klebemuffe metrisch PN10 EPDM PTFE EO412 24VAC

Ball Valve S4 2W PVC grey PVC-U solvent socket ends metric PN10 EPDM PTFE EO412 24VAC

Art.Nr. Ref.No	DN	d	VE Pack
120368	32	40	1,00
120427	40	50	1,00
120428	50	63	1,00



Kugelhahn S4 2W PVC grau PVC-U Klebemuffe metrisch PN10 EPDM PTFE EO412 230VAC

Ball Valve S4 2W PVC grey PVC-U solvent socket ends metric PN10 EPDM PTFE EO412 230VAC

Art.Nr. Ref.No	DN	d	VE Pack
120363	32	40	1,00
120364	40	50	1,00
120365	50	63	1,00



Kugelhahn S4 2W DN65 PVC grau PVC-U Klebemuffe d75 metrisch PN6 EPDM PTFE EO425 24VAC

Ball Valve S4 2W DN65 PVC grey PVC-U solvent socket ends d75 metric PN6 EPDM PTFE EO425 24VAC

Art.Nr. Ref.No	VE Pack
120429	1,00



Kugelhahn S4 2W DN80 PVC grau PVC-U Klebemuffe d90 metrisch PN5 EPDM PTFE EO425 24VAC

Ball Valve S4 2W DN80 PVC grey PVC-U solvent socket ends d90 metric PN5 EPDM PTFE EO425 24VAC

Art.Nr. Ref.No	VE Pack
120430	1,00

2-Wege Kugelhahn mit elektrischem Stellantrieb 2-Ways ball valve with electric actuator



Kugelhahn S4 2W DN80 PVC grau PVC-U Klebemuffe d110 metrisch PN4 EPDM PTFE EO425 24VAC

Ball Valve S4 2W DN80 PVC grey PVC-U solvent socket ends d110 metric PN4 EPDM PTFE EO425 24VAC

Art.Nr. Ref.No	VE Pack
122127	1,00



Kugelhahn S4 2W PVC grau PVC-U Klebemuffe metrisch PN6 EPDM PTFE EO425 230VAC

Ball Valve S4 2W PVC grey PVC-U solvent socket ends metric PN6 EPDM PTFE EO425 230VAC

Art.Nr. Ref.No	DN	d	VE Pack
120366	65	75	1,00
120367	80	90	1,00
121994	80	110	1,00



Kugelhahn S4 2W PVC grau PVC-U Klebemuffe metrisch EPDM ptf e OA6 230VAC

Ball Valve S4 2W PVC grey PVC-U solvent socket ends metric EPDM ptf e OA6 230VAC

Art.Nr. Ref.No	DN	d	VE Pack
122584	65	75	1,00
122585	80	90	1,00
122586	80	110	1,00

3-Wege Kugelhahn mit elektrischem Stellantrieb

3-Ways ball valve with electric actuator



**Kugelhahn S4 3W T-Kugel PVC grau PVC-U Klebemuffe metrisch PN10 EPDM PTFE
EO510 pi 4 positions MVO 12-230 VAC/DC**

*Ball Valve S4 3W T-ball PVC grey PVC-U solvent socket ends metric PN10 EPDM PTFE
EO510 pi 4 positions MVO 12-230 VAC/DC*

Art.Nr. Ref.No	DN	d	Anschlussvariante Choice of configuration	VE Pack
125558	10	16	T-Kugel T-ball	1,00
125559	15	20	T-Kugel T-ball	1,00



**Kugelhahn S4 3W T-Kugel PVC grau PVC-U Klebemuffe metrisch PN10 EPDM PTFE
EO510 MVO 12-230 VAC/DC**

*Ball Valve S4 3W T-ball PVC grey PVC-U solvent socket ends metric PN10 EPDM PTFE
EO510 MVO 12-230 VAC/DC*

Art.Nr. Ref.No	DN	d	VE Pack
125560	20	25	1,00
125561	25	32	1,00



**Kugelhahn S4 3W T-Kugel PVC grau PVC-U Klebemuffe metrisch PN3 EPDM PTFE
EO510 MVO 12-230 VAC/DC**

*Ball Valve S4 3W T-ball PVC grey PVC-U solvent socket ends metric PN3 EPDM PTFE
EO510 MVO 12-230 VAC/DC*

Art.Nr. Ref.No	DN	d	VE Pack
125556	32	40	1,00
125557	40	50	1,00



**Kugelhahn S4 3W T-Kugel PVC grau PVC-U Klebemuffe metrisch PN10 EPDM PTFE
EO412 4positions 230VAC**

*Ball Valve S4 3W T-ball PVC grey PVC-U solvent socket ends metric PN10 EPDM PTFE
EO412 4positions 230VAC*

Art.Nr. Ref.No	DN	d	VE Pack
122023	32	40	1,00
121887	40	50	1,00
121894	50	63	1,00



**Kugelhahn S4 3W T-Kugel PVC grau PVC-U Klebemuffe metrisch PN10 EPDM PTFE
EO412 4positions 24VAC**

*Ball Valve S4 3W T-ball PVC grey PVC-U solvent socket ends metric PN10 EPDM PTFE
EO412 4positions 24VAC*

Art.Nr. Ref.No	DN	d	VE Pack
122194	32	40	1,00
121949	40	50	1,00
122089	50	63	1,00

3-Wege Kugelhahn mit elektrischem Stellantrieb - Type Solar

3-Ways ball valve with electric actuator - type Solar



**Kugelhahn S4 3W T-Kugel PVC grau PVC-U Klebemuffe metrisch PN3 EPDM tpe
EO510 MVO 12-230 VAC/DC Solar**

*Ball Valve S4 3W T-ball PVC grey PVC-U solvent socket ends metric PN3 EPDM tpe
EO510 MVO 12-230 VAC/DC solar*

Art.Nr. Ref.No	DN	d	VE Pack
125562	32	40	1,00
125563	40	50	1,00
125564	50	63	1,00



**Kugelhahn S4 3W T-Kugel PVC grau PVC-U Klebemuffe metrisch PN3 EPDM tpe
EO510 ECO 230VAC Solar**

*Ball Valve S4 3W T-ball PVC grey PVC-U solvent socket ends metric PN3 EPDM tpe
EO510 ECO 230VAC solar*

Art.Nr. Ref.No	DN	d	VE Pack
120647	32	40	1,00
120651	40	50	1,00
120655	50	63	1,00

Absperrklappe S4 mit elektrischem Stellantrieb

Butterfly valve S4 with electric actuator



Absperrklappe S4 PVC grau Flanschanschluss DIN-ANSI-JIS PN10 EPDM OA6 230VAC

Butterfly Valve S4 PVC grey Flange-connection DIN-ANSI-JIS PN10 EPDM OA6 230VAC

Art.Nr. Ref.No	DN	d	Sitzdichtung material seat-sealing	VE Pack
122344	80	90-3"	EPDM	1,00
122345	100	110-4"	EPDM	1,00
122346	125	140 - 5"	EPDM	1,00



Absperrklappe S4 PVC grau Flanschanschluss DIN-ANSI-JIS PN6 EPDM OA15 230VAC

Butterfly Valve S4 PVC grey Flange-connection DIN-ANSI-JIS PN6 EPDM OA15 230VAC

Art.Nr. Ref.No	DN	d	Sitzdichtung material seat-sealing	VE Pack
122347	150	160 - 6"	EPDM	1,00
122348	200	225 - 8"	EPDM	1,00



Absperrklappe S4 PVC grau Flanschanschluss DIN-ANSI-JIS PN10 FPM OA6 230VAC

Butterfly Valve S4 PVC grey Flange-connection DIN-ANSI-JIS PN10 FPM OA6 230VAC

Art.Nr. Ref.No	DN	d	Sitzdichtung material seat-sealing	VE Pack
122428	80	90-3"	FPM	1,00
122429	100	110-4"	FPM	1,00
122430	125	140 - 5"	FPM	1,00



Absperrklappe S4 PVC grau Flanschanschluss DIN-ANSI-JIS PN6 FPM OA15 230VAC

Butterfly Valve S4 PVC grey Flange-connection DIN-ANSI-JIS PN6 FPM OA15 230VAC

Art.Nr. Ref.No	DN	d	Sitzdichtung material seat-sealing	VE Pack
122431	150	160 - 6"	FPM	1,00
122432	200	225 - 8"	FPM	1,00

Absperrklappe K4 mit elektrischem Stellantrieb

Butterfly valve K4 with electric actuator



Absperrklappe K4 PVC grau Flanschanschluss DIN-ANSI-JIS PN10 EPDM OA6 230VAC

Butterfly Valve K4 PVC grey Flange-connection DIN-ANSI-JIS PN10 EPDM OA6 230VAC

Art.Nr. Ref.No	DN	d	Sitzdichtung material seat-sealing	VE Pack
125985	65	75-2 1/2"	EPDM	1,00
125986	80	90-3"	EPDM	1,00
125987	100	110-4"	EPDM	1,00
125988	150	160 - 6"	EPDM	1,00
125989	200	225 - 8"	EPDM	1,00



Absperrklappe K4 PVC grau Flanschanschluss DIN-ANSI-JIS PN10 EPDM OA6 24VAC

Butterfly Valve K4 PVC grey Flange-connection DIN-ANSI-JIS PN10 EPDM OA6 24VAC

Art.Nr. Ref.No	DN	d	Sitzdichtung material seat-sealing	VE Pack
125960	65	75-2 1/2"	EPDM	1,00
125961	80	90-3"	EPDM	1,00
125962	100	110-4"	EPDM	1,00
125963	150	160 - 6"	EPDM	1,00
125964	200	225 - 8"	EPDM	1,00



Absperrklappe K4 PVC grau Flanschanschluss DIN-ANSI-JIS PN10 FPM OA6 230VAC

Butterfly Valve K4 PVC grey Flange-connection DIN-ANSI-JIS PN10 FPM OA6 230VAC

Art.Nr. Ref.No	DN	d	Sitzdichtung material seat-sealing	VE Pack
125990	65	75-2 1/2"	FPM	1,00
125991	80	90-3"	FPM	1,00
125992	100	110-4"	FPM	1,00
125993	150	160 - 6"	FPM	1,00
125994	200	225 - 8"	FPM	1,00

Absperrklappe K4 mit elektrischem Stellantrieb

Butterfly valve K4 with electric actuator



Absperrklappe K4 PVC grau Flanschanschluss DIN-ANSI-JIS PN10 FPM OA6 24VAC
Butterfly Valve K4 PVC grey Flange-connection DIN-ANSI-JIS PN10 FPM OA6 24VAC

Art.Nr. <i>Ref.No</i>	DN	d	Sitzdichtung <i>material seat-sealing</i>	VE <i>Pack</i>
125965	65	75-1/2"	FPM	1,00
125966	80	90-3"	FPM	1,00
125967	100	110-4"	FPM	1,00
125968	150	160 - 6"	FPM	1,00
125969	200	225 - 8"	FPM	1,00

2-Wege Kugelhahn mit pneumatischem Stellantrieb

2-Ways ball valve with pneumatic actuator



Kugelhahn S4 2W PVC grau PVC-U Klebemuffe metrisch PN16 EPDM PTFE PO-NC
Ball Valve S4 2W PVC grey PVC-U solvent socket ends metric PN16 EPDM PTFE PO-NC

Art.Nr. Ref.No	DN	d	Antriebstype actuator drive	VE Pack
122411	25	32	UT05-2	1,00
122415	65	75	UT25-4	1,00



Kugelhahn S4 2W PVC grau PVC-U Klebemuffe metrisch EPDM ptfe PO-NC
Ball Valve S4 2W PVC grey PVC-U solvent socket ends metric EPDM ptfe PO-NC

Art.Nr. Ref.No	DN	d	Antriebstype actuator drive	VE Pack
122408	10	16	UT05-2	1,00
122409	15	20	UT05-2	1,00
122410	20	25	UT05-2	1,00
122412	32	40	UT15-4	1,00
122413	40	50	UT15-4	1,00
122414	50	63	UT17-4	1,00
122417	80	110	UT30-4	1,00



Kugelhahn S4 2W DN80 PVC grau PVC-U Klebemuffe d90 metrisch PN6 EPDM PTFE PO-NC UT30-4
Ball Valve S4 2W DN80 PVC grey PVC-U solvent socket ends d90 metric PN6 EPDM PTFE PO-NC UT30-4

Art.Nr. Ref.No	VE Pack
122416	1,00



Kugelhahn S4 2W PVC grau PVC-U Klebemuffe metrisch PN16 EPDM PTFE PO-NO
Ball Valve S4 2W PVC grey PVC-U solvent socket ends metric PN16 EPDM PTFE PO-NO

Art.Nr. Ref.No	DN	d	Antriebstype actuator drive	VE Pack
124470	10	16	UT05-2	1,00
124473	25	32	UT05-2	1,00

2-Wege Kugelhahn mit pneumatischem Stellantrieb

2-Ways ball valve with pneumatic actuator



Kugelhahn S4 2W PVC grau PVC-U Klebemuffe metrisch EPDM ptfe PO-NO
Ball Valve S4 2W PVC grey PVC-U solvent socket ends metric EPDM ptfe PO-NO

Art.Nr. Ref.No	DN	d	Antriebstype actuator drive	VE Pack
124471	15	20	UT05-2	1,00
124472	20	25	UT05-2	1,00
124474	32	40	UT15-4	1,00
124475	40	50	UT15-4	1,00
124476	50	63	UT17-4	1,00



Kugelhahn S4 2W PVC grau PVC-U Klebemuffe metrisch PN6 EPDM PTFE PO-NO
Ball Valve S4 2W PVC grey PVC-U solvent socket ends metric PN6 EPDM PTFE PO-NO

Art.Nr. Ref.No	DN	d	Antriebstype actuator drive	VE Pack
124477	65	75	UT25-4	1,00
124478	80	90	UT30-4	1,00
124479	80	110	UT30-4	1,00



Kugelhahn S4 2W PVC grau PVC-U Klebemuffe metrisch PN16 EPDM PTFE PO-DA
Ball Valve S4 2W PVC grey PVC-U solvent socket ends metric PN16 EPDM PTFE PO-DA

Art.Nr. Ref.No	DN	d	Antriebstype actuator drive	VE Pack
122421	25	32	UT05DA	1,00
122422	32	40	UT15DA	1,00



Kugelhahn S4 2W PVC grau PVC-U Klebemuffe metrisch EPDM PTFE PO-DA
Ball Valve S4 2W PVC grey PVC-U solvent socket ends metric EPDM PTFE PO-DA

Art.Nr. Ref.No	DN	d	Antriebstype actuator drive	VE Pack
122418	10	16	UT05DA	1,00
122419	15	20	UT05DA	1,00
122420	20	25	UT05DA	1,00
122423	40	50	UT15DA	1,00
122424	50	63	UT15DA	1,00

2-Wege Kugelhahn mit pneumatischem Stellantrieb

2-Ways ball valve with pneumatic actuator



Kugelhahn S4 2W PVC grau PVC-U Klebemuffe metrisch PN6 EPDM PTFE PO-DA
Ball Valve S4 2W PVC grey PVC-U solvent socket ends metric PN6 EPDM PTFE PO-DA

Art.Nr. Ref.No	DN	d	Antriebstype actuator drive	VE Pack
122425	65	75	UT15DA	1,00
122426	80	90	UT17DA	1,00
122427	80	110	UT17DA	1,00

Kugelhahn S4 2W PVC grau PVC-U Klebemuffe metrisch PN16 EPDM PTFE Pneumatik-Adapterset
Ball Valve S4 2W PVC grey PVC-U solvent socket ends metric PN16 EPDM PTFE pneumatik-adapterset

Art.Nr. Ref.No	DN	d	VE Pack
122357	10	16	5,00
122358	15	20	5,00
122256	20	25	5,00
122238	25	32	5,00
122237	32	40	5,00
122257	40	50	5,00
121898	50	63	5,00
122359	65	75	2,00

Kugelhahn S4 2W PVC grau PVC-U Klebemuffe metrisch PN10 EPDM PTFE Pneumatik-Adapterset
Ball Valve S4 2W PVC grey PVC-U solvent socket ends metric PN10 EPDM PTFE pneumatik-adapterset

Art.Nr. Ref.No	DN	d	VE Pack
122258	80	90	1,00
122360	80	110	1,00

2-Wege Kugelhahn mit pneumatischem Stellantrieb 2-Ways ball valve with pneumatic actuator

Kugelhahn S4 3W T-Kugel PVC grau PVC-U Klebemuffe metrisch PN16 EPDM ptfe Pneumatik-Adapterset

Ball Valve S4 3W T-ball PVC grey PVC-U solvent socket ends metric PN16 EPDM ptfe
pneumatik-adapterset

Art.Nr. Ref.No	DN	d	VE Pack
120792	10	16	2,00
120569	15	20	2,00
120794	20	25	2,00
120571	25	32	2,00
120796	32	40	2,00
120573	40	50	2,00
120575	50	63	2,00

Kugelhahn S4 3W L-Kugel PVC grau PVC-U Klebemuffe metrisch PN16 EPDM ptfe Pneumatik-Adapterset

Ball Valve S4 3W L-ball PVC grey PVC-U solvent socket ends metric PN16 EPDM ptfe
pneumatik-adapterset

Art.Nr. Ref.No	DN	d	VE Pack
120793	10	16	2,00
120570	15	20	2,00
120795	20	25	2,00
120572	25	32	2,00
120797	32	40	2,00
120574	40	50	2,00
120576	50	63	2,00

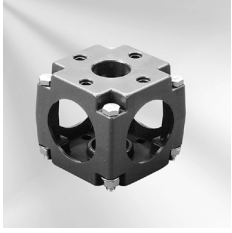


Armaturenhalterung für Kugelhahn S4 2W PVC grau komplett

Valve bracket for ball valves S4 2W PVC grey complete

Art.Nr. Ref.No	DN	VE Pack
170276	10/15	50,00
170277	20	1,00
170278	25	1,00
170229	32	1,00
170231	40	1,00
170233	50	25,00
170266	65	1,00
170267	80	10,00

2-Wege Kugelhahn mit pneumatischem Stellantrieb 2-Ways ball valve with pneumatic actuator



Armaturenhalterung für Kugelhahn S4 3W PVC grau komplett
Valve bracket for ball valves S4 3W PVC grey complete

Art.Nr. <i>Ref.No</i>	DN	VE <i>Pack</i>
170042	10/15	10,00
170022	25	50,00
170001	40	20,00
170018	50	20,00

Absperrklappe S4 mit pneumatischem Stellantrieb

Butterfly valve S4 with pneumatic actuator



Absperrklappe S4 PVC grau Flanschanschluss DIN-ANSI-JIS PN10 EPDM PO-NC
Butterfly Valve S4 PVC grey Flange-connection DIN-ANSI-JIS PN10 EPDM PO-NC

Art.Nr. Ref.No	DN	d	Antriebstype actuator drive	VE Pack
122932	80	90-3"	UT35-4	1,00
122933	100	110-4"	UT35-4	1,00
122934	125	140 - 5"	UT45-4	1,00



Absperrklappe S4 PVC grau Flanschanschluss DIN-ANSI-JIS PN6 EPDM PO-NC
Butterfly Valve S4 PVC grey Flange-connection DIN-ANSI-JIS PN6 EPDM PO-NC

Art.Nr. Ref.No	DN	d	Antriebstype actuator drive	VE Pack
122935	150	160 - 6"	UT45-4	1,00
122936	200	225 - 8"	UT50-4	1,00



Absperrklappe S4 PVC grau Flanschanschluss DIN-ANSI-JIS PN10 EPDM PO-NO
Butterfly Valve S4 PVC grey Flange-connection DIN-ANSI-JIS PN10 EPDM PO-NO

Art.Nr. Ref.No	DN	d	Antriebstype actuator drive	VE Pack
122339	80	90-3"	UT35-4	1,00
122340	100	110-4"	UT35-4	1,00
122342	125	140 - 5"	UT45-4	1,00



Absperrklappe S4 PVC grau Flanschanschluss DIN-ANSI-JIS PN6 EPDM PO-NO
Butterfly Valve S4 PVC grey Flange-connection DIN-ANSI-JIS PN6 EPDM PO-NO

Art.Nr. Ref.No	DN	d	Antriebstype actuator drive	VE Pack
122343	150	160 - 6"	UT45-4	1,00
122341	200	225 - 8"	UT50-4	1,00

Absperrklappe S4 mit pneumatischem Stellantrieb

Butterfly valve S4 with pneumatic actuator



Absperrklappe S4 PVC grau Flanschanschluss DIN-ANSI-JIS PN10 EPDM PO-DA
Butterfly Valve S4 PVC grey Flange-connection DIN-ANSI-JIS PN10 EPDM PO-DA

Art.Nr. Ref.No	DN	d	Antriebstype actuator drive	VE Pack
122331	80	90-3"	UT20DA	1,00
122332	100	110-4"	UT25DA	1,00
122337	125	140 - 5"	UT30DA	1,00



Absperrklappe S4 PVC grau Flanschanschluss DIN-ANSI-JIS PN6 EPDM PO-DA UT35 DA
Butterfly Valve S4 PVC grey Flange-connection DIN-ANSI-JIS PN6 EPDM PO-DA UT35 DA

Art.Nr. Ref.No	DN	d	Antriebstype actuator drive	VE Pack
122333	150	160 - 6"	UT35DA	1,00
122338	200	225 - 8"	UT35DA	1,00



Elekt. Stell. Rückmelder für pneum. Kolbenantrieb CROUZET 2,5 - 16 A 24VDC
Elect.position indicator for pneumatic actuators CROUZET 2,5 - 16 A 24VDC

Art.Nr. Ref.No	VE Pack
50506	1,00



Magnetventil für pneum. Kolbenantrieb 5/2+3/2-Wege Namurflansch G1/4" IP65
Solenoid Valve for pneumatic actuators 5/2+3/2-way namur-flange G1/4" IP65

Art.Nr. Ref.No	VE Pack
50061	1,00



Magnetventil für pneum. Kolbenantrieb 5/2+3/2-Wege Namurflansch G1/4" IP65
Solenoid Valve for pneumatic actuators 5/2+3/2-way namur-flange G1/4" IP65

Art.Nr. Ref.No	VE Pack
50062	1,00

Absperrklappe K4 mit pneumatischem Stellantrieb

Butterfly valve K4 with pneumatic actuator



Absperrklappe K4 PVC grau Flanschanschluss DIN-ANSI-JIS PN10 EPDM PO-NC
Butterfly Valve K4 PVC grey Flange-connection DIN-ANSI-JIS PN10 EPDM PO-NC

Art.Nr. Ref.No	DN	d	VE Pack
125885	65	75-2 1/2"	1,00
125886	80	90-3"	1,00
125887	100	110-4"	1,00
125888	150	160 - 6"	1,00
125889	200	225 - 8"	1,00



Absperrklappe K4 PVC grau Flanschanschluss DIN-ANSI-JIS PN10 EPDM PO-NO
Butterfly Valve K4 PVC grey Flange-connection DIN-ANSI-JIS PN10 EPDM PO-NO

Art.Nr. Ref.No	DN	d	VE Pack
125935	65	75-2 1/2"	1,00
125936	80	90-3"	1,00
125937	100	110-4"	1,00
125938	150	160 - 6"	1,00
125939	200	225 - 8"	1,00



Absperrklappe K4 PVC grau Flanschanschluss DIN-ANSI-JIS PN10 EPDM PO-DA
Butterfly Valve K4 PVC grey Flange-connection DIN-ANSI-JIS PN10 EPDM PO-DA

Art.Nr. Ref.No	DN	d	VE Pack
125910	65	75-2 1/2"	1,00
125911	80	90-3"	1,00
125912	100	110-4"	1,00
125913	150	160 - 6"	1,00
125914	200	225 - 8"	1,00



Absperrklappe K4 PVC grau Flanschanschluss DIN-ANSI-JIS PN10 FPM PO-NC
Butterfly Valve K4 PVC grey Flange-connection DIN-ANSI-JIS PN10 FPM PO-NC

Art.Nr. Ref.No	DN	d	VE Pack
125890	65	75	1,00
125891	80	90	1,00
125892	100	110	1,00
125893	150	160	1,00
125894	200	225	1,00

Absperrklappe K4 mit pneumatischem Stellantrieb

Butterfly valve K4 with pneumatic actuator



Absperrklappe K4 PVC grau Flanschanschluss DIN-ANSI-JIS PN10 FPM PO-NO
Butterfly Valve K4 PVC grey Flange-connection DIN-ANSI-JIS PN10 FPM PO-NO

Art.Nr. <i>Ref.No</i>	DN	d	VE <i>Pack</i>
125940	65	75	1,00
125941	80	90	1,00
125942	100	110	1,00
125943	150	160	1,00
125944	200	225	1,00



Absperrklappe K4 PVC grau Flanschanschluss DIN-ANSI-JIS PN10 FPM PO-DA
Butterfly Valve K4 PVC grey Flange-connection DIN-ANSI-JIS PN10 FPM PO-DA

Art.Nr. <i>Ref.No</i>	DN	d	VE <i>Pack</i>
125915	65	75	1,00
125916	80	90	1,00
125917	100	110	1,00
125918	150	160	1,00
125919	200	225	1,00

Membranventil T4 mit pneumatischem Stellantrieb

Diaphragm valve T4 with pneumatic actuator



Membranventil T4 PVC grau Verschraubung/PVC-U Klebemuffe metrisch PN10 EPDM EPDM PO-NC

Diaphragm Valve T4 PVC grey PVC-U union solvent socket end metric PN10 EPDM EPDM PO-NC

Art.Nr. Ref.No	DN	d	Antriebstype actuator drive	VE Pack
125616	15	20	K62	1,00
125619	20	25	K62	1,00
125622	25	32	K82	1,00
125625	32	40	K122	1,00
125628	40	50	K122	1,00
125631	50	63	K123	1,00



Membranventil T4 PVC grau Verschraubung/PVC-U Klebemuffe metrisch PN10 EPDM PTFE-beschichtet PO-NC

Diaphragm Valve T4 PVC grey PVC-U union solvent socket end metric PN10 EPDM PTFE-coated PO-NC

Art.Nr. Ref.No	DN	d	Antriebstype actuator drive	VE Pack
125621	20	25	K82	1,00
125624	25	32	K82	1,00
125627	32	40	K122	1,00
125630	40	50	K122	1,00



Membranventil T4 PVC grau Verschraubung/PVC-U Klebemuffe metrisch PN10 FPM PTFE-beschichtet PO-NC

Diaphragm Valve T4 PVC grey PVC-U union solvent socket end metric PN10 FPM PTFE-coated PO-NC

Art.Nr. Ref.No	DN	d	Antriebstype actuator drive	VE Pack
125618	15	20	K82	1,00
125633	50	63	K123	1,00



Membranventil T4 PVC grau Verschraubung/PVC-U Klebemuffe metrisch PN10 FPM FPM PO-NC

Diaphragm Valve T4 PVC grey PVC-U union solvent socket end metric PN10 FPM FPM PO-NC

Art.Nr. Ref.No	DN	d	Antriebstype actuator drive	VE Pack
125617	15	20	K62	1,00
125620	20	25	K62	1,00
125623	25	32	K82	1,00
125626	32	40	K122	1,00
125629	40	50	K122	1,00
125632	50	63	K123	1,00

Membranventil T4 mit pneumatischem Stellantrieb

Diaphragm valve T4 with pneumatic actuator



Membranventil T4 PVC grau Verschraubung/PVC-U Klebemuffe metrisch PN10 EPDM EPDM PO-NO

Diaphragm Valve T4 PVC grey PVC-U union solvent socket end metric PN10 EPDM EPDM PO-NO

Art.Nr. Ref.No	DN	d	Antriebstype actuator drive	VE Pack
125642	15	20	K62	1,00
125644	20	25	K62	1,00
125645	25	32	K82	1,00
125646	32	40	K122	1,00
125647	40	50	K122	1,00
125648	50	63	K123	1,00



Membranventil T4 PVC grau Verschraubung/PVC-U Klebemuffe metrisch PN10 EPDM PTFE-beschichtet PO-NO

Diaphragm Valve T4 PVC grey PVC-U union solvent socket end metric PN10 EPDM PTFE-coated PO-NO

Art.Nr. Ref.No	DN	d	Antriebstype actuator drive	VE Pack
126071	15	20	K62	1,00
126072	20	25	K62	1,00
126073	25	32	K82	1,00
126074	32	40	K122	1,00
126075	40	50	K122	1,00
126076	50	63	K123	1,00



Membranventil T4 PVC grau Verschraubung/PVC-U Klebemuffe metrisch PN10 EPDM PTFE-beschichtet PO-DA

Diaphragm Valve T4 PVC grey PVC-U union solvent socket end metric PN10 EPDM PTFE-coated PO-DA

Art.Nr. Ref.No	DN	d	VE Pack
126064	15	20	1,00
126065	20	25	1,00
126066	25	32	1,00
126067	32	40	1,00
126068	40	50	1,00
126069	50	63	1,00

Membranventil T4 mit pneumatischem Stellantrieb

Diaphragm valve T4 with pneumatic actuator



Membranventil T4 PVC grau PVC Klebestutzen metrisch PN10 EPDM PO-NC
Diaphragm Valve T4 PVC grey PVC-U solvent spigot ends metric PN10 EPDM PO-NC

Art.Nr. Ref.No	DN	d	Antriebstype actuator drive	VE Pack
125588	15	20	K62	1,00
125591	20	25	K62	1,00
125594	25	32	K82	1,00
125597	32	40	K122	1,00
125600	40	50	K122	1,00
125603	50	63	K123	1,00



Membranventil T4 PVC grau PVC Klebestutzen da metrisch PN10 PTFE-beschichtet PO-NC
Diaphragm Valve T4 PVC grey PVC-U solvent spigot ends metric PN10 PTFE-coated PO-NC

Art.Nr. Ref.No	DN	d	Antriebstype actuator drive	VE Pack
125590	15	20	K82	1,00
125593	20	25	K82	1,00
125596	25	32	K82	1,00
125599	32	40	K122	1,00
125602	40	50	K122	1,00
125605	50	63	K122	1,00



Membranventil T4 PVC grau PVC Klebestutzen da metrisch PN10 FPM PO-NC
Diaphragm Valve T4 PVC grey PVC-U solvent spigot ends metric PN10 FPM PO-NC

Art.Nr. Ref.No	DN	d	Antriebstype actuator drive	VE Pack
125589	15	20	K62	1,00
125592	20	25	K62	1,00
125595	25	32	K82	1,00
125598	32	40	K122	1,00
125601	40	50	K122	1,00
125604	50	63	K123	1,00

Membranventil T4 mit pneumatischem Stellantrieb

Diaphragm valve T4 with pneumatic actuator



Membranventil T4 PVC grau PVC Klebestutzen da metrisch PN10 EPDM PO-NO
Diaphragm Valve T4 PVC grey PVC-U solvent spigot ends da metric PN10 EPDM PO-NO

Art.Nr. Ref.No	DN	d	Antriebstype actuator drive	VE Pack
126051	15	25	K62	1,00
126053	20	25	K62	1,00
126055	25	32	K82	1,00
126057	32	40	K122	1,00
126059	40	50	K122	1,00
126061	50	63	K123	1,00



Membranventil T4 PVC grau PVC Klebestutzen da metrisch PN10 PTFE-beschichtet PO-NO
Diaphragm Valve T4 PVC grey PVC-U solvent spigot ends da metric PN10 PTFE-coated PO-NO

Art.Nr. Ref.No	DN	d	Antriebstype actuator drive	VE Pack
126052	15	20	K62	1,00
126054	20	25	K62	1,00
126056	25	32	K82	1,00
126058	32	40	K122	1,00
126060	40	50	K122	1,00
126062	50	63	K123	1,00



Membranventil T4 PVC grau PVC Klebestutzen da metrisch PN10 EPDM PO-DA
Diaphragm Valve T4 PVC grey PVC-U solvent spigot ends da metric PN10 EPDM PO-DA

Art.Nr. Ref.No	DN	d	Antriebstype actuator drive	VE Pack
125607	15	20	K62	1,00
125608	20	25	K62	1,00
125609	25	32	K82	1,00
125610	32	40	K122	1,00
125611	40	50	K122	1,00
125612	50	63	K123	1,00

Membranventil T4 mit pneumatischem Stellantrieb

Diaphragm valve T4 with pneumatic actuator



Membranventil T4 PVC grau PVC Klebestutzen da metrisch PN10 PTFE-beschichtet PO-DA

Diaphragm Valve T4 PVC grey PVC-U solvent spigot ends da metric PN10 PTFE-coated PO-DA

Art.Nr. Ref.No	DN	d	VE Pack
126043	15	20	1,00
126044	15	25	1,00
126045	25	32	1,00
126046	32	40	1,00
126047	40	50	1,00
126048	50	63	1,00



Membranventil T4 PVC grau Flanschanschluss DIN PN10 EPDM PO-NC

Diaphragm Valve T4 PVC grey Flange-connection DIN PN10 EPDM PO-NC

Art.Nr. Ref.No	DN	d	Antriebstype actuator drive	VE Pack
125652	15	20	K62	1,00
125655	20	25	K62	1,00
125658	25	32	K82	1,00
125661	32	40	K122	1,00
125664	40	50	K122	1,00
125667	50	63	K123	1,00



Membranventil T4 PVC grau Flanschanschluss DIN PN10 PTFE-beschichtet PO-NC

Diaphragm Valve T4 PVC grey Flange-connection DIN PN10 PTFE-coated PO-NC

Art.Nr. Ref.No	DN	d	Antriebstype actuator drive	VE Pack
125654	15	20	K62	1,00
125657	20	25	K82	1,00
125660	25	32	K82	1,00
125663	32	40	K122	1,00
125666	40	50	K122	1,00
125669	50	63	K123	1,00

Membranventil T4 mit pneumatischem Stellantrieb

Diaphragm valve T4 with pneumatic actuator



Membranventil T4 PVC grau Flanschanschluss DIN PN10 FPM PO-NC

Diaphragm Valve T4 PVC grey Flange-connection DIN PN10 FPM PO-NC

Art.Nr. Ref.No	DN	d	Antriebstype actuator drive	VE Pack
125653	15	20	K62	1,00
125656	20	25	K62	1,00
125659	25	32	K82	1,00
125662	32	40	K122	1,00
125665	40	50	K122	1,00
125668	50	63	K123	1,00



Membranventil T4 PVC grau Flanschanschluss DIN PN10 EPDM PO-NO

Diaphragm Valve T4 PVC grey Flange-connection DIN PN10 EPDM PO-NO

Art.Nr. Ref.No	DN	d	Antriebstype actuator drive	VE Pack
126086	15	20	K62	1,00
126088	20	25	K62	1,00
126090	25	32	K82	1,00
126092	32	40	K122	1,00
126094	40	50	K122	1,00
126096	50	63	K123	1,00



Membranventil T4 PVC grau Flanschanschluss DIN PN10 PTFE-beschichtet PO-NO

Diaphragm Valve T4 PVC grey Flange-connection DIN PN10 PTFE-coated PO-NO

Art.Nr. Ref.No	DN	d	Antriebstype actuator drive	VE Pack
126087	15	20	K62	1,00
126089	20	25	K62	1,00
126091	25	32	K82	1,00
126093	32	40	K122	1,00
126095	40	50	K122	1,00
126097	50	63	K123	1,00

Membranventil T4 mit pneumatischem Stellantrieb

Diaphragm valve T4 with pneumatic actuator



Membranventil T4 PVC grau Flanschanschluss DIN PN10 EPDM PO-DA
Diaphragm Valve T4 PVC grey Flange-connection DIN PN10 EPDM PO-DA

Art.Nr. Ref.No	DN	d	Antriebstype actuator drive	VE Pack
125671	15	20	K62	1,00
125672	20	25	K62	1,00
125673	25	32	K82	1,00
125674	32	40	K122	1,00
125675	40	50	K122	1,00
125676	50	63	K123	1,00



Membranventil T4 PVC grau Flanschanschluss DIN PN10 PTFE-beschichtet PO-DA
Diaphragm Valve T4 PVC grey Flange-connection DIN PN10 PTFE-coated PO-DA

Art.Nr. Ref.No	DN	d	VE Pack
126078	15	20	1,00
126079	15	25	1,00
126080	25	32	1,00
126081	32	40	1,00
126082	40	50	1,00
126083	50	63	1,00

INHALTSVERZEICHNIS

CONTENTS INDICE

PVC Armaturen / PVC Valves

Laborkugelhahn
Laboratory ball valve

2-Wege Kugelhahn S5, S6
2-Ways ball valve S5, S6

2-Wege Kugelhahn S4
2-Ways ball valve S4

SINGLE UNION 2-Wege Kugelhahn S5
SINGLE UNION 2-Ways ball valve S5

Absperrschieber
Knife gate valve

2-3 Wege Drehschieber
Infinity 2-3 port valve

3-Wege Kugelhahn S4
3-Ways ball valve S4

Membranventil T4
Diaphragm valve T4

Absperrklappe K4
Butterfly valve K4

Absperrklappe S4
Butterfly valve S4

Kegelrückschlagventil S6
Cone check valve S6

Kegelrückschlagventil S4
Conce check valve S4

Schmutzfilter S4
Line strainer S4

Be- und Entlüftungsventile
Aerating valves

Fußventil
Foot valve

Rückschlagklappe K4
Wafer type check valve K4

Rückschlagklappe S4
Wafer type check valve S4

Durchflussmesser
Flow meter

Laborkugelhahn

Laboratory ball valve



Laborkugelhahn DN6 PVC grau Innengewinde/Aussengewinde 1/4" - 1/4" BSP PN10 EPDM PTFE ohne Zubehör, ohne O-Ring 10*2

Laboraty Ball Valve DN6 PVC grey Female thread/Male thread 1/4" - 1/4" BSP PN10 EPDM ptfe

Art.Nr. Ref.No	VE Pack
122450	100,00



Laborkugelhahn DN6 PVC grau Innengewinde/Aussengewinde 1/4" - 1/4" BSP PN10 EPDM PTFE ohne Zubehör, nur mit Schlauchtülle

Laboraty Ball Valve DN6 PVC grey Female thread/Male thread 1/4" - 1/4" BSP PN10 EPDM ptfe

Art.Nr. Ref.No	VE Pack
122461	100,00



Laborkugelhahn mit Zubehörset DN6 PVC grau Innengewinde/Aussengewinde 3/8" - 1/4" BSP PN10 EPDM PTFE

Laboraty Ball Valve DN6 PVC grey Female thread/Male thread 3/8" - 1/4" BSP PN10 EPDM ptfe

Art.Nr. Ref.No	VE Pack
122751	100,00



Laborkugelhahn DN6 PVC grau Innengewinde/Aussengewinde 3/8" - 1/4" BSP PN10 EPDM PTFE ohne Zubehör, nur mit Schlauchtülle

Laboraty Ball Valve DN6 PVC grey Female thread/Male thread 3/8" - 1/4" BSP PN10 EPDM ptfe

Art.Nr. Ref.No	VE Pack
122756	100,00



Laborkugelhahn DN6 PVC grau Innengewinde/Aussengewinde 1/4" - 1/4" BSP PN10 FPM PTFE ohne Zubehör, nur mit Schlauchtülle

Laboraty Ball Valve DN6 PVC grey Female thread/Male thread 1/4" - 1/4" BSP PN10 FPM ptfe

Art.Nr. Ref.No	VE Pack
122784	100,00

Laborkugelhahn

Laboratory ball valve



Laborkugelhahn DN6 PVC grau Innengewinde/Aussengewinde 1/4" - 1/4" BSP PN10 EPDM PTFE ohne Zubehör

Laboraty Ball Valve DN6 PVC grey Female thread/Male thread 1/4" - 1/4" BSP PN10
EPDM ptfе

Art.Nr. Ref.No	VE Pack
122839	100,00



Laborkugelhahn DN6 PVC grau Innengewinde/Aussengewinde 3/8" - 1/4" BSP PN10 EPDM PTFE ohne Zubehör

Laboraty Ball Valve DN6 PVC grey Female thread/Male thread 3/8" - 1/4" BSP PN10
EPDM ptfе

Art.Nr. Ref.No	VE Pack
125138	100,00

2-Wege Kugelhahn S5, S6

2-Ways ball valve S5, S6



Kugelhahn S5 2W PVC grau PVC-U Klebemuffe metrisch PN10 EPDM PE
Ball Valve S5 2W PVC grey PVC-U solvent socket ends metric PN10 EPDM PE

Art.Nr. Ref.No	DN	d	VE Pack
120011	10	16	50,00
120026	15	20	50,00
120041	20	25	50,00
120056	25	32	40,00
120071	32	40	20,00
120134	65	75	4,00



Kugelhahn S6 2W PVC grau PVC-U Klebemuffe metrisch PN16 EPDM PE lose verpackt
Ball Valve S6 2W PVC grey PVC-U solvent socket ends metric PN16 EPDM PE lose packed

Art.Nr. Ref.No	DN	d	VE Pack
125462	40	50	20,00
125463	50	63	10,00



Kugelhahn S5 2W PVC grau PVC-U Klebemuffe metrisch PN10 EPDM PE
Ball Valve S5 2W PVC grey PVC-U solvent socket ends metric PN10 EPDM PE

Art.Nr. Ref.No	DN	d	VE Pack
120713	80	90	4,00
121744	80	110	4,00



Kugelhahn S5 2W PVC grau PVC Klebestutzen da metrisch PN10 EPDM PE
Ball Valve S5 2W PVC grey PVC-U solvent spigot ends da metric PN10 EPDM PE

Art.Nr. Ref.No	DN	d	VE Pack
120956	10	16	50,00
120960	15	20	50,00
120964	20	25	50,00
120968	25	32	40,00
120972	32	40	20,00

2-Wege Kugelhahn S5, S6

2-Ways ball valve S5, S6



Kugelhahn S6 2W PVC grau PVC Klebestutzen da metrisch PN16 EPDM PE lose verpackt

Ball Valve S6 2W PVC grey PVC-U solvent spigot ends da metric PN16 EPDM PE lose packed

Art.Nr. Ref.No	DN	d	VE Pack
125464	40	50	15,00
125465	50	63	10,00



Kugelhahn S5 2W PVC grau PVC Klebestutzen da metrisch PN10 EPDM PE

Ball Valve S5 2W PVC grey PVC-U solvent spigot ends da metric PN10 EPDM PE

Art.Nr. Ref.No	DN	d	VE Pack
120983	65	75	8,00
120987	80	90	4,00



Kugelhahn S5 2W PVC grau Gewindemuffe BSP PN10 EPDM PE

Ball Valve S5 2W PVC grey female thread socket BSP PN10 EPDM PE

Art.Nr. Ref.No	DN	d	VE Pack
120013	10	3/8	50,00
120028	15	1/2	50,00
120043	20	3/4	50,00
120058	25	1	40,00
120073	32	1 1/4	20,00



Kugelhahn S6 2W PVC grau Gewindemuffe BSP PN16 EPDM PE

Ball Valve S6 2W PVC grey female thread socket BSP PN16 EPDM PE

Art.Nr. Ref.No	DN	d	VE Pack
125466	40	1 1/2"	20,00
125467	50	2"	10,00

2-Wege Kugelhahn S5, S6

2-Ways ball valve S5, S6



Kugelhahn S5 2W PVC grau PE-Schweißstutzen metrisch EPDM PE
Ball Valve S5 2W PVC grey PE fusion spigot metric EPDM PE

Art.Nr. Ref.No	DN	d	VE Pack
120014	10	16	50,00
120029	15	20	50,00
120044	20	25	50,00
120059	25	32	40,00
120074	32	40	20,00
120137	65	75	8,00



Kugelhahn S6 2W PVC grau PE-Schweißstutzen metrisch PN10 EPDM PE
Ball Valve S6 2W PVC grey PE fusion spigot metric PN10 EPDM PE

Art.Nr. Ref.No	DN	d	VE Pack
125468	40	50	15,00
125469	50	63	10,00



Kugelhahn S5 2W PVC grau PE-Schweißstutzen metrisch EPDM PE
Ball Valve S5 2W PVC grey PE fusion spigot metric EPDM PE

Art.Nr. Ref.No	DN	d	VE Pack
120137	65	75	8,00
122708	80	110	4,00



Kugelhahn S5 2W PVC grau PVC-U Klebemuffe JIS PN10 EPDM PE
Ball Valve S5 2W PVC grey PVC-U solvent socket ends JIS PN10 EPDM PE

Art.Nr. Ref.No	DN	d	VE Pack
122944	10	3/8	20,00
122945	15	1/2	50,00
122946	20	3/4	50,00
122947	25	1	40,00
122948	32	1 1/4	20,00
122969	65	2 1/2	8,00
122970	80	3	4,00

2-Wege Kugelhahn S5, S6

2-Ways ball valve S5, S6



Kugelhahn S6 2W PVC grau PVC-U Klebemuffe JIS PN16 EPDM PE lose verpackt
Ball Valve S6 2W PVC grey PVC-U solvent socket ends JIS PN16 EPDM PE lose packed

Art.Nr. Ref.No	DN	d	VE Pack
125470	40	1 1/2	20,00
125471	50	2	10,00



Kugelhahn S5 2W PVC grau PVC-U Klebemuffe ASTM PN10 EPDM PE
Ball Valve S5 2W PVC grey PVC-U solvent socket ends ASTM PN10 EPDM PE

Art.Nr. Ref.No	DN	d	VE Pack
120012	10	3/8	50,00
122880	15	1/2	50,00
122881	20	3/4	50,00
122882	25	1	40,00
122883	32	1 1/4	20,00
122147	65	2 1/2	8,00
122886	80	3	4,00



Kugelhahn S6 2W PVC grau PVC-U Klebemuffe ASTM PN16 EPDM PE lose verpackt
Ball Valve S6 2W PVC grey PVC-U solvent socket ends ASTM PN16 EPDM PE lose packed

Art.Nr. Ref.No	DN	d	VE Pack
125472	40	1 1/2	20,00
125473	50	2	10,00



Kugelhahn S5 2W DN80 PVC grau PVC-U Klebemuffe d 4" ASTM PN6 EPDM PE
Ball Valve S5 2W DN80 PVC grey PVC-U solvent socket ends d 4" ASTM PN6 EPDM PE

Art.Nr. Ref.No	VE Pack
122887	4,00

2-Wege Kugelhahn S5, S6

2-Ways ball valve S5, S6



Kugelhahn S5 2W PVC grau PVC-U Klebemuffe metrisch PN10 EPDM PTFE einzeln verpackt

Ball Valve S5 2W PVC grey PVC-U solvent socket ends metric PN10 EPDM PTFE single packed

Art.Nr. Ref.No	DN	d	VE Pack
120001	10	16	20,00
120016	15	20	20,00
120031	20	25	20,00
120046	25	32	15,00
120061	32	40	20,00
120124	65	75	4,00
120266	80	90	1,00



Kugelhahn S6 2W PVC grau PVC-U Klebemuffe metrisch PN16 EPDM PTFE einzeln verpackt

Ball Valve S6 2W PVC grey PVC-U solvent socket ends metric PN16 EPDM PTFE single packed

Art.Nr. Ref.No	DN	d	VE Pack
125486	40	50	20,00
125487	50	63	10,00



Kugelhahn S5 2W PVC grau PVC Klebestutzen da metrisch PN10 EPDM PTFE einzeln verpackt

Ball Valve S5 2W PVC grey PVC-U solvent spigot ends da metric PN10 EPDM PTFE single packed

Art.Nr. Ref.No	DN	d	VE Pack
120954	10	16	20,00
120958	15	20	20,00
120962	20	25	20,00
120966	25	32	20,00
120970	32	40	15,00
120981	65	75	4,00
120985	80	90	5,00



Kugelhahn S6 2W PVC grau PVC Klebestutzen da metrisch PN16 EPDM PTFE einzeln verpackt

Ball Valve S6 2W PVC grey PVC-U solvent spigot ends da metric PN16 EPDM PTFE single packed

Art.Nr. Ref.No	DN	d	VE Pack
125488	40	50	15,00
125489	50	63	10,00

2-Wege Kugelhahn S5, S6

2-Ways ball valve S5, S6



Kugelhahn S5 2W PVC grau Gewindemuffe BSP PN10 EPDM PTFE einzeln verpackt
Ball Valve S5 2W PVC grey female thread socket BSP PN10 EPDM PTFE single packed

Art.Nr. Ref.No	DN	d	VE Pack
120003	10	3/8	20,00
120018	15	1/2	20,00
120033	20	3/4	20,00
120048	25	1	15,00
120063	32	1 1/4	15,00
120126	65	2 1/2	4,00
120263	80	3	1,00



Kugelhahn S6 2W PVC grau Gewindemuffe BSP PN16 EPDM PTFE einzeln verpackt
Ball Valve S6 2W PVC grey female thread socket BSP PN16 EPDM PTFE single packed

Art.Nr. Ref.No	DN	d	VE Pack
125490	40	1 1/2"	20,00
125491	50	2"	10,00



Kugelhahn S5 2W PVC grau PE-Schweißstutzen metrisch PN10 EPDM PTFE einzeln verpackt
Ball Valve S5 2W PVC grey PE fusion spigot metric PN10 EPDM PTFE single packed

Art.Nr. Ref.No	DN	d	VE Pack
122157	10	16	30,00
120019	15	20	20,00
120034	20	25	20,00
120049	25	32	10,00
120064	32	40	15,00
120708	65	75	4,00
120762	80	90	5,00



Kugelhahn S5 2W DN80 PVC grau PE-Schweißstutzen d110 metrisch PN6 EPDM PTFE einzeln verpackt
Ball Valve S5 2W DN80 PVC grey PE fusion spigot d110 metric PN6 EPDM PTFE single packed

Art.Nr. Ref.No	VE Pack
122710	5,00

2-Wege Kugelhahn S5, S6

2-Ways ball valve S5, S6



Kugelhahn S5 2W PVC grau PVC-U Klebemuffe metrisch PN10 FPM PTFE einzeln verpackt

Ball Valve S5 2W PVC grey PVC-U solvent socket ends metric PN10 FPM PTFE single packed

Art.Nr. Ref.No	DN	d	VE Pack
120006	10	16	20,00
120021	15	20	20,00
120036	20	25	20,00
120051	25	32	15,00
120066	32	40	15,00
120129	65	75	4,00
120267	80	90	1,00



Kugelhahn S6 2W PVC grau PVC-U Klebemuffe metrisch PN16 FPM ptfe einzeln verpackt

Ball Valve S6 2W PVC grey PVC-U solvent socket ends metric PN16 FPM ptfe single packed

Art.Nr. Ref.No	DN	d	VE Pack
125498	40	50	20,00
125499	50	63	10,00



Kugelhahn S5 2W PVC grau PVC Klebestutzen da metrisch PN10 FPM PTFE einzeln verpackt

Ball Valve S5 2W PVC grey PVC-U solvent spigot ends da metric PN10 FPM PTFE single packed

Art.Nr. Ref.No	DN	d	VE Pack
120955	10	16	20,00
120959	15	20	20,00
120963	20	25	20,00
120967	25	32	20,00
120971	32	40	15,00
120982	65	75	4,00
120986	80	90	5,00



Kugelhahn S6 2W PVC grau PVC Klebestutzen da metrisch PN16 FPM ptfe einzeln verpackt

Ball Valve S6 2W PVC grey PVC-U solvent spigot ends da metric PN16 FPM ptfe single packed

Art.Nr. Ref.No	DN	d	VE Pack
125500	40	50	15,00
125501	50	63	10,00

2-Wege Kugelhahn S5, S6

2-Ways ball valve S5, S6



Kugelhahn S6 2W PVC grau Gewindemuffe BSP PN16 FPM ptfe einzeln verpackt
Ball Valve S6 2W PVC grey female thread socket BSP PN16 FPM ptfe single packed

Art.Nr. Ref.No	DN	d	VE Pack
125502	40	1 1/2	20,00
125503	50	2	10,00



Kugelhahn S6 2W PVC grau PE-Schweißstutzen metrisch PN10 FPM ptfe einzeln verpackt
Ball Valve S6 2W PVC grey PE fusion spigot metric PN10 FPM ptfe single packed

Art.Nr. Ref.No	DN	d	VE Pack
125504	40	50	15,00
125505	50	63	10,00



Kugelhahn S5 2W PVC grau PVC-U Klebemuffe JIS PN10 EPDM PTFE einzeln verpackt
Ball Valve S5 2W PVC grey PVC-U solvent socket ends JIS PN10 EPDM PTFE single packed

Art.Nr. Ref.No	DN	d	VE Pack
120438	10	3/8	20,00
120441	15	1/2	20,00
120442	20	3/4	20,00
120443	25	1	15,00
120444	32	1 1/4	15,00
120447	65	2 1/2	4,00
120448	80	3	5,00



Kugelhahn S6 2W PVC grau PVC-U Klebemuffe JIS PN16 EPDM ptfe einzeln verpackt
Ball Valve S6 2W PVC grey PVC-U solvent socket ends JIS PN16 EPDM ptfe single packed

Art.Nr. Ref.No	DN	d	VE Pack
125494	40	1 1/2	20,00
125495	50	2	10,00

2-Wege Kugelhahn S5, S6

2-Ways ball valve S5, S6



Kugelhahn S5 2W PVC grau PVC-U Klebemuffe ASTM PN10 EPDM PTFE einzeln verpackt

Ball Valve S5 2W PVC grey PVC-U solvent socket ends ASTM PN10 EPDM PTFE single packed

Art.Nr. Ref.No	DN	d	VE Pack
120002	10	3/8	20,00
120017	15	1/2	20,00
122074	20	3/4	20,00
122070	25	1	15,00
122078	32	1 1/4	20,00
120710	65	2 1/2	4,00
120000	80	3	1,00



Kugelhahn S6 2W PVC grau PVC-U Klebemuffe ASTM PN16 EPDM ptf e einzeln verpackt

Ball Valve S6 2W PVC grey PVC-U solvent socket ends ASTM PN16 EPDM ptf e single packed

Art.Nr. Ref.No	DN	d	VE Pack
125496	40	1 1/2	20,00
125497	50	2	10,00



Kugelhahn S5 2W PVC grau PVC-U Klebemuffe JIS PN10 FPM PTFE einzeln verpackt

Ball Valve S5 2W PVC grey PVC-U solvent socket ends JIS PN10 FPM PTFE single packed

Art.Nr. Ref.No	DN	d	VE Pack
124570	10	3/8	20,00
124872	15	1/2	20,00
124873	20	3/4	20,00
124874	25	1	15,00
124875	32	1 1/4	15,00
124878	65	2 1/2	4,00
124879	80	3	5,00

2-Wege Kugelhahn S5, S6

2-Ways ball valve S5, S6



Kugelhahn S6 2W PVC grau PVC-U Klebemuffe JIS PN16 FPM ptfе einzeln verpackt
Ball Valve S6 2W PVC grey PVC-U solvent socket ends JIS PN16 FPM ptfе single packed

Art.Nr. Ref.No	DN	d	VE Pack
125506	40	1 1/2	20,00
125507	50	2	10,00



Kugelhahn S5 2W PVC grau PVC-U Klebemuffe ASTM PN10 FPM PTFE einzeln verpackt
Ball Valve S5 2W PVC grey PVC-U solvent socket ends ASTM PN10 FPM PTFE single packed

Art.Nr. Ref.No	DN	d	VE Pack
120988	10	3/8	20,00
120989	15	1/2	20,00
120990	20	3/4	20,00
122142	25	1	15,00
122152	32	1 1/4	15,00
122153	65	2 1/2	4,00
120996	80	3	1,00



Kugelhahn S6 2W PVC grau PVC-U Klebemuffe ASTM PN16 FPM ptfе einzeln verpackt
Ball Valve S6 2W PVC grey PVC-U solvent socket ends ASTM PN16 FPM ptfе single packed

Art.Nr. Ref.No	DN	d	VE Pack
125508	40	1 1/2	20,00
125509	50	2	10,00

2-Wege Kugelhahn S4 2-Ways ball valve S4



Kugelhahn S4 2W PVC grau PVC-U Klebemuffe metrisch PN16 EPDM PTFE einzeln verpackt

Ball Valve S4 2W PVC grey PVC-U solvent socket ends metric PN16 EPDM PTFE single packed

Art.Nr. Ref.No	DN	d	VE Pack
121116	10	16	20,00
121118	15	20	20,00
121120	20	25	15,00
121122	25	32	10,00
121124	32	40	15,00
121048	40	50	10,00
121049	50	63	8,00
121128	65	75	4,00



Kugelhahn S4 2W PVC grau PVC-U Klebemuffe metrisch PN10 EPDM PTFE einzeln verpackt

Ball Valve S4 2W PVC grey PVC-U solvent socket ends metric PN10 EPDM PTFE single packed

Art.Nr. Ref.No	DN	d	VE Pack
121130	80	90	1,00
121746	80	110	1,00



Kugelhahn S4 2W PVC grau PVC-U Klebemuffe metrisch PN16 FPM PTFE einzeln verpackt

Ball Valve S4 2W PVC grey PVC-U solvent socket ends metric PN16 FPM PTFE single packed

Art.Nr. Ref.No	DN	d	VE Pack
121117	10	16	20,00
121119	15	20	20,00
121121	20	25	15,00
121123	25	32	10,00
121125	32	40	15,00
121126	40	50	10,00
121127	50	63	8,00
121129	65	75	4,00

2-Wege Kugelhahn S4 2-Ways ball valve S4



Kugelhahn S4 2W PVC grau Gewindemuffe BSP PN16 EPDM PTFE einzeln verpackt
Ball Valve S4 2W PVC grey female thread socket BSP PN16 EPDM PTFE single packed

Art.Nr. Ref.No	DN	d	VE Pack
121132	10	3/8	20,00
121134	15	1/2	20,00
121136	20	3/4	20,00
121138	25	1	10,00
121140	32	1 1/4	15,00
121142	40	1 1/2	10,00
121144	50	2	8,00
121146	65	2 1/2	4,00
121148	80	3	1,00



Kugelhahn S4 2W PVC grau PVC-U Klebemuffe ASTM PN16 EPDM PTFE einzeln verpackt
Ball Valve S4 2W PVC grey PVC-U solvent socket ends ASTM PN16 EPDM PTFE single packed

Art.Nr. Ref.No	DN	d	VE Pack
121939	10	3/8	20,00
121760	15	1/2	20,00
122073	20	3/4	15,00
122069	25	1	10,00
122077	32	1 1/4	15,00
121107	40	1 1/2	10,00
121108	50	2	8,00
120323	65	2 1/2	4,00



Kugelhahn S4 2W PVC grau PVC-U Klebemuffe ASTM PN10 EPDM PTFE einzeln verpackt
Ball Valve S4 2W PVC grey PVC-U solvent socket ends ASTM PN10 EPDM PTFE single packed

Art.Nr. Ref.No	DN	d	VE Pack
120362	80	3	1,00
122143	80	4	1,00

2-Wege Kugelhahn S4

2-Ways ball valve S4



Kugelhahn S4 2W PVC grau PVC-U Klebemuffe metrisch PN10 FPM PTFE einzeln verpackt

Ball Valve S4 2W PVC grey PVC-U solvent socket ends metric PN10 FPM PTFE single packed

Art.Nr. Ref.No	DN	d	VE Pack
121131	80	90	1,00
121747	80	110	1,00



Kugelhahn S4 2W PVC grau PVC-U Klebemuffe JIS PN16 EPDM PTFE einzeln verpackt

Ball Valve S4 2W PVC grey PVC-U solvent socket ends JIS PN16 EPDM PTFE single packed

Art.Nr. Ref.No	DN	d	VE Pack
120876	10	3/8	20,00
120877	15	1/2	20,00
120878	20	3/4	10,00
120879	25	1	20,00
120880	32	1 1/4	15,00
120881	40	1 1/2	10,00
120882	50	2	8,00
120883	65	2 1/2	4,00



Kugelhahn S4 2W PVC grau PVC-U Klebemuffe JIS PN10 EPDM PTFE einzeln verpackt

Ball Valve S4 2W PVC grey PVC-U solvent socket ends JIS PN10 EPDM PTFE single packed

Art.Nr. Ref.No	DN	d	VE Pack
120884	80	3	4,00
120885	80	4	1,00

SINGLE UNION 2-Wege Kugelhahn S5

SINGLE UNION 2-Ways ball valve S5



Kugelhahn SU 2W PVC grau PVC-U Klebemuffe metrisch PN10 EPDM PE
Ball Valve SU 2W PVC grey PVC-U solvent socket ends metric PN10 EPDM PE

Art.Nr. Ref.No	DN	d	VE Pack
122101	15	20	50,00
122100	20	25	50,00
122099	25	32	40,00
73748	40	50	20,00
73749	50	63	10,00



Kugelhahn SU 2W PVC grau PVC-U Klebemuffe ASTM PN10 EPDM PE
Ball Valve SU 2W PVC grey PVC-U solvent socket ends ASTM PN10 EPDM PE

Art.Nr. Ref.No	DN	d	VE Pack
122098	15	1/2	50,00
122097	20	3/4	50,00
122095	25	3/4	40,00



Kugelhahn SU 2W PVC weiss PVC-U Klebemuffe ASTM PN10 EPDM PE
Ball Valve SU 2W PVC white PVC-U solvent socket ends ASTM PN10 EPDM PE

Art.Nr. Ref.No	DN	d	VE Pack
70494	40	1 1/2	20,00
122107	50	2	18,00



Kugelhahn SU 2W DN40 PVC grau Gewindemuffe 1 1/2" PN10 EPDM PE
Ball Valve SU 2W DN40 PVC grey female thread socket 1 1/2" ASTM PN10 EPDM PE

Art.Nr. Ref.No	VE Pack
73752	10,00



Kugelhahn SU 2W DN40 PVC grau Gewindemuffe 1 1/2" ASTM PN10 EPDM PE
Ball Valve SU 2W DN40 PVC grey female thread socket 1 1/2" ASTM PN10 EPDM PE

Art.Nr. Ref.No	DN	d	VE Pack
70278	40	1 1/2"	20,00

SINGLE UNION 2-Wege Kugelhahn S5

SINGLE UNION 2-Ways ball valve S5



**Kugelhahn SU 2W DN25 PVC weiss Aussengewinde R 1 1/2" NPT / Schlauchtülle
32/38mm PN10 EPDM PE**

*Ball Valve SU 2W DN25 PVC white male thread ends R 1 1/2" NPT / hose nozzle d=32/
38mm PN10 EPDM PE*

Art.Nr.	VE
<i>Ref.No</i>	<i>Pack</i>
75546	40,00



**Kugelhahn SU 2W DN40 PVC weiss Aussengewinde R 1 1/2" NPT / Schlauchtülle
32/38mm PN10 EPDM PE**

*Ball Valve SU 2W DN40 PVC white male thread ends R 1 1/2" NPT / hose nozzle d=32/
38mm PN10 EPDM PE*

Art.Nr.	VE
<i>Ref.No</i>	<i>Pack</i>
75544	20,00

Absperrschieber

Knife gate valve



Absperrschieber PVC PVC-U Klebemuffe metrisch
knife gate valve PVC PVC-U solvent socket ends metric

Art.Nr. Ref.No	DN	d	VE Pack
71746	25	32	30,00
70968	40	50	30,00
70632	50	63	25,00
71518	65	75	18,00
71463	80	90	2,00
71461	100	110	2,00



Absperrschieber DN40 PVC schwarz PVC-U Klebemuffe d50
Knife gate valve DN40 PVC black PVC-U solvent socket ends d50 metric

Art.Nr. Ref.No	VE Pack
70215	10,00



Absperrschieber PVC grau PVC-U Klebemuffe ASTM
Knife gate valve PVC grey PVC-U solvent socket ends ASTM

Art.Nr. Ref.No	DN	d	VE Pack
70457	40	1 1/2	10,00
71520	65	2 1/2	10,00
71464	80	3	2,00
71462	100	4	2,00



Absperrschieber PVC weiss PVC-U Klebemuffe ASTM
Knife gate valve PVC white PVC-U solvent socket ends ASTM

Art.Nr. Ref.No	DN	d	VE Pack
71747	40	1	10,00
70609	50	2	10,00

Absperrschieber

Knife gate valve



Absperrschieber PVC weiss Verschraubung/PVC-U Klebemuffe metrisch
Knife gate valve PVC white PVC-U union solvent socket end metric

Art.Nr. Ref.No	DN	d	VE Pack
70586	40	50	10,00
70627	50	63	1,00



Absperrschieber DN40 PVC weiss Verschraubung/PVC-U Klebemuffe d 1 1/2" ASTM
Knife gate valve DN40 PVC white PVC-U union solvent socket end d 1 1/2" ASTM

Art.Nr. Ref.No	DN	d	VE Pack
71579	40	1 1/2	10,00
71522	50	2	1,00



Absperrschieber DN40 PVC grau Schlauchanschluß d38 beidseitig
Knife gate valve DN40 PVC grey Hose-connection d38, 2x

Art.Nr. Ref.No	VE Pack
70614	10,00



Absperrschieber DN40 PVC grau Schlauchtülle /AG d38 - R1 1/2" Ocean-Einzelverpackung
Knife gate valve DN40 PVC grey Hose nozzle /Male thread d38 - R1 1/2" Ocean-single packing

Art.Nr. Ref.No	VE Pack
120338	10,00



Absperrschieber DN40 PVC grau Klebemuffe d/ Innengewinde 1 1/2" BSP
Knife gate valve DN40 PVC grey female thread R 1 1/2" BSP

Art.Nr. Ref.No	VE Pack
70211	10,00

Absperrschieber

Knife gate valve



Absperrschieber DN40 PVC weiss Aussengewinde R 1 1/2" BSP
Knife gate valve DN40 PVC white male thread ends R 1 1/2" BSP

Art.Nr. <i>Ref.No</i>	VE <i>Pack</i>
70572	10,00



Absperrschieber DN40 PVC grau Innengewinde/Aussengewinde R 1 1/2" BSP PN3,5 EPDM
Knife gate valve DN40 PVC grey Female thread/Male thread R 1 1/2" BSP PN3,5 EPDM

Art.Nr. <i>Ref.No</i>	VE <i>Pack</i>
70573	24,00

2-3 Wege Drehschieber

Infinity 2-3 port valve



Drehschieber 3W PVC grau Verschraubung/PVC-U Klebemuffe metrisch
Rotary valve 3W PVC grey PVC-U union solvent socket end metric

Art.Nr. Ref.No	DN	d	VE Pack
71633	40	50	12,00
71917	50	63	12,00



Drehschieber 3W PVC grau Verschraubung/PVC-U Klebemuffe ASTM
Rotary valve 3W DN40 PVC grey PVC-U union solvent socket end d50 ASTM

Art.Nr. Ref.No	DN	d	VE Pack
71951	40	1 1/2"	10,00
71629	50	2"	10,00



Drehschieber 3W PVC grau Verschraubung/PVC-U Klebemuffe metrisch
rotary valve 3W PVC grey PVC-U union solvent socket end metric

Art.Nr. Ref.No	DN	d	VE Pack
72228	40	50	10,00
72229	50	63	10,00



Drehschieber PVC grau Verschraubung/PVC-U Klebemuffe ASTM
rotary valve PVC grey PVC-U union solvent socket end ASTM

Art.Nr. Ref.No	DN	d	VE Pack
72593	40	1 1/2"	10,00
72594	50	2"	10,00



Drehschieber 2W PVC grau PVC-U Klebemuffe ASTM
Rotary valve 2W PVC grey PVC-U solvent socket ends ASTM

Art.Nr. Ref.No	DN	d	VE Pack
73758	40	1 1/2"	10,00
73759	50	2"	10,00

3-Wege Kugelhahn S4

3-Ways ball valve S4



Kugelhahn S4 3W T-Kugel PVC grau PVC-U Klebemuffe metrisch PN16 ptfе einzeln verpackt

Ball Valve S4 3W T-ball PVC grey PVC-U solvent socket ends metric PN16 ptfе single packed

Art.Nr. <i>Ref.No</i>	DN	d	Anschlussvariante <i>Choice of configuration</i>	VE <i>Pack</i>
120625	10	16	T-Kugel <i>T-ball</i>	10,00
120626	10	16	L-Kugel <i>L-ball</i>	15,00
120627	15	20	T-Kugel <i>T-ball</i>	15,00
120628	15	20	L-Kugel <i>L-ball</i>	10,00
121816	20	25	T-Kugel <i>T-ball</i>	15,00
121832	20	25	L-Kugel <i>L-ball</i>	15,00
121774	25	32	T-Kugel <i>T-ball</i>	15,00
121833	25	32	L-Kugel <i>L-ball</i>	15,00
122714	32	40	T-Kugel <i>T-ball</i>	5,00
122717	32	40	L-Kugel <i>L-ball</i>	5,00
122715	40	50	T-Kugel <i>T-ball</i>	5,00
122718	40	50	L-Kugel <i>L-ball</i>	5,00
122716	50	63	T-Kugel <i>T-ball</i>	4,00
122719	50	63	L-Kugel <i>L-ball</i>	4,00

3-Wege Kugelhahn S4

3-Ways ball valve S4



Kugelhahn S4 3W T-Kugel PVC grau PVC-U Klebemuffe JIS PN16 EPDM ptfe einzeln verpackt

Ball Valve S4 3W T-ball PVC grey PVC-U solvent socket ends JIS PN16 EPDM ptfe single packed

Art.Nr. <i>Ref.No</i>	DN	d	Anschlussvariante <i>Choice of configuration</i>	VE <i>Pack</i>
124599	10	3/8	T-Kugel <i>T-ball</i>	15,00
124600	10	3/8	L-Kugel <i>L-ball</i>	15,00
124601	15	1/2	T-Kugel <i>T-ball</i>	20,00
124602	15	1/2	L-Kugel <i>L-ball</i>	15,00
124603	20	3/4	T-Kugel <i>T-ball</i>	15,00
124604	20	3/4	L-Kugel <i>L-ball</i>	15,00
124605	25	1	T-Kugel <i>T-ball</i>	15,00
124606	25	1	L-Kugel <i>L-ball</i>	15,00
124607	32	1 1/4	T-Kugel <i>T-ball</i>	10,00
124608	32	1 1/4	L-Kugel <i>L-ball</i>	10,00
124609	40	1 1/2	T-Kugel <i>T-ball</i>	5,00
124610	40	1 1/2	L-Kugel <i>L-ball</i>	5,00
124611	50	2	T-Kugel <i>T-ball</i>	10,00
124612	50	2	L-Kugel <i>L-ball</i>	4,00

3-Wege Kugelhahn S4

3-Ways ball valve S4



**Kugelhahn S4 3W L-Kugel PVC grau PVC-U Klebemuffe ASTM PN16 EPDM ptfe
einzeln verpackt**

*Ball Valve S4 3W L-ball PVC grey PVC-U solvent socket ends ASTM PN16 EPDM ptfe
single packed*

Art.Nr. <i>Ref.No</i>	DN	d	Anschlussvariante <i>Choice of configuration</i>	VE <i>Pack</i>
120629	10	3/8	T-Kugel <i>T-ball</i>	15,00
120630	10	3/8	L-Kugel <i>L-ball</i>	15,00
120631	15	1/2	T-Kugel <i>T-ball</i>	15,00
120633	15	1/2	L-Kugel <i>L-ball</i>	15,00
122995	20	3/4	T-Kugel <i>T-ball</i>	15,00
122996	20	3/4	L-Kugel <i>L-ball</i>	15,00
122195	25	1	T-Kugel <i>T-ball</i>	15,00
121897	25	1	L-Kugel <i>L-ball</i>	15,00
122997	32	1 1/4	T-Kugel <i>T-ball</i>	10,00
122998	32	1 1/4	L-Kugel <i>L-ball</i>	5,00
122752	40	1 1/2	T-Kugel <i>T-ball</i>	5,00
122753	40	1 1/2	L-Kugel <i>L-ball</i>	5,00
122754	50	2	T-Kugel <i>T-ball</i>	4,00
122755	50	2	L-Kugel <i>L-ball</i>	4,00

Membranventil T4

Diaphragm valve T4



Membranventil T4 PVC grau Verschraubung/PVC-U Klebemuffe metrisch PN10 EPDM EPDM

Diaphragm Valve T4 PVC grey PVC-U union solvent socket end metric PN10 EPDM EPDM

Art.Nr. Ref.No	DN	d	VE Pack
122212	15	20	20,00
122213	20	25	20,00
122214	25	32	15,00
122215	32	40	10,00
122216	40	50	10,00
122217	50	63	5,00



Membranventil T4 PVC grau Verschraubung/PVC-U Klebemuffe ASTM PN10 EPDM EPDM

Diaphragm Valve T4 PVC grey PVC-U union solvent socket end ASTM PN10 EPDM EPDM

Art.Nr. Ref.No	DN	d	VE Pack
122905	15	1/2	10,00
122906	20	3/4	20,00
122907	25	1	15,00
122908	32	1 1/4	10,00
122909	40	1 1/2	8,00
122910	50	2	5,00



Membranventil T4 PVC grau Flanschanschluss DIN PN10 EPDM

Diaphragm Valve T4 PVC grey Flange-connection DIN PN10 EPDM

Art.Nr. Ref.No	DN	d	VE Pack
120189	15	20	4,00
120190	20	25	4,00
120191	25	32	4,00
120192	32	40	4,00
120193	40	50	4,00
120194	50	63	5,00
120198	65	75	1,00
120200	80	90	1,00
120898	100	110	1,00
120899	125	140	1,00

Membranventil T4

Diaphragm valve T4



Membranventil T4 PVC grau Verschraubung/PVC-U Klebemuffe metrisch PN10 FPM FPM

Diaphragm Valve T4 PVC grey PVC-U union solvent socket end metric PN10 FPM FPM

Art.Nr. Ref.No	DN	d	VE Pack
122376	15	20	10,00
122377	20	25	20,00
122378	25	32	10,00
122379	32	40	10,00
122380	40	50	10,00
122381	50	63	10,00



Membranventil T4 PVC grau Verschraubung/PVC-U Klebemuffe ASTM PN10 FPM FPM

Diaphragm Valve T4 PVC grey PVC-U union solvent socket end ASTM PN10 FPM FPM

Art.Nr. Ref.No	DN	d	VE Pack
122911	15	1/2	10,00
122912	20	3/4	10,00
122913	25	1	10,00
122914	32	1 1/4	10,00
122915	40	1 1/2	10,00
122916	50	2	10,00



Membranventil T4 PVC grau Flanschanschluss DIN PN10 FPM

Diaphragm Valve T4 PVC grey Flange-connection DIN PN10 FPM

Art.Nr. Ref.No	DN	d	VE Pack
120202	15	20	4,00
120203	20	25	4,00
120205	25	32	4,00
120206	32	40	4,00
120208	40	50	4,00
120209	50	63	4,00
120210	65	75	1,00
120211	80	90	4,00

Absperrklappe K4

Butterfly valve K4



Absperrklappe K4 PVC grau Flanschanschluss DIN-ANSI-JIS PN10
Butterfly Valve K4 PVC grey Flange-connection DIN-ANSI-JIS PN10

Art.Nr. Ref.No	DN	d	VE Pack
125860	65	75	1,00
125861	80	90	1,00
125862	100	110	1,00
125863	150	160	1,00
125864	200	225	1,00



Absperrklappe K4 DN65 PVC grau Flanschanschluss 75-2 1/2" DIN-ANSI-JIS PN10 FPM
Butterfly Valve K4 DN65 PVC grey Flange-connection 75-2 1/2" DIN-ANSI-JIS PN10 FPM

Art.Nr. Ref.No	DN	d	VE Pack
125865	65	75	1,00
125866	80	90	1,00
125867	100	110	1,00
125868	150	160	1,00
125869	200	225	1,00

Absperrklappe S4

Butterfly valve S4



Absperrklappe S4 PVC grau Flanschanschluss DIN-ANSI-JIS PN10 EPDM
Butterfly Valve S4 PVC grey Flange-connection DIN-ANSI-JIS PN10 EPDM

Art.Nr. Ref.No	DN	d	Sitzdichtung material seat-sealing	VE Pack
121919	80	90-3"	EPDM	1,00
121892	100	110-4"	EPDM	1,00
122001	125	140-5"	EPDM	1,00



Absperrklappe S4 PVC grau Flanschanschluss DIN-ANSI-JIS PN6 EPDM
Butterfly Valve S4 PVC grey Flange-connection DIN-ANSI-JIS PN6 EPDM

Art.Nr. Ref.No	DN	d	Sitzdichtung material seat-sealing	VE Pack
121871	150	160-6"	EPDM	1,00
121872	200	225-8"	EPDM	1,00



Absperrklappe S4 PVC grau Flanschanschluss DIN-ANSI-JIS
Butterfly Valve S4 PVC grey Flange-connection DIN-ANSI-JIS

Art.Nr. Ref.No	DN	d	Sitzdichtung material seat-sealing	VE Pack
121923	80	90-3"	FPM	1,00
121924	100	110-4"	FPM	1,00
122192	125	140-5"	FPM	1,00



Absperrklappe S4 PVC grau Flanschanschluss DIN-ANSI-JIS PN6
Butterfly Valve S4 PVC grey Flange-connection DIN-ANSI-JIS PN6

Art.Nr. Ref.No	DN	d	Sitzdichtung material seat-sealing	VE Pack
121925	150	160-6"	FPM	1,00
121926	200	225-8"	FPM	1,00

Absperrklappe S4

Butterfly valve S4



Absperrklappe S4 PVC grau Flanschanschluss DIN-ANSI-JIS PN10 mit Handgetriebe
Butterfly Valve S4 PVC grey Flange-connection DIN-ANSI-JIS PN10 with worm gear actuator

Art.Nr. Ref.No	DN	d	Sitzdichtung material seat-sealing	VE Pack
122322	80	90-3"	EPDM	1,00
122321	100	110-4"	EPDM	1,00
122320	125	140 - 5"	EPDM	1,00
122319	150	160 - 6"	EPDM	1,00
122318	200	225 - 8"	EPDM	1,00



Absperrklappe S4 PVC grau Flanschanschluss DIN-ANSI-JIS mit Handgetriebe
Butterfly Valve S4 PVC grey Flange-connection DIN-ANSI-JIS with worm gear actuator

Art.Nr. Ref.No	DN	d	Sitzdichtung material seat-sealing	VE Pack
122393	80	90-3"	FPM	1,00
122394	100	110-4"	FPM	1,00
122395	125	140 - 5"	FPM	1,00
122396	150	160 - 6"	FPM	1,00
122397	200	225 - 8"	FPM	1,00



Absperrklappe mit Edelstahlklappe GG25 blau Flanschanschluss DIN PN10 EPDM mit Handgetriebe
Butterfly Valve with inox flap GG25 blue Flange-connection DIN PN10 EPDM with worm gear actuator

Art.Nr. Ref.No	DN	d	VE Pack
71890	250	315 - 12"	1,00
71891	250	280 - 10"	1,00
71681	350	400 - 14"	1,00
71628	400	450 - 16"	1,00

Kegelrückschlagventil S6

Cone check valve S6



Rückschlagventil S4P DN10 PVC grau PVC-U Klebemuffe d16 metrisch PN16 EPDM EPDM

Cone Check Valve S4P DN10 PVC grey PVC-U solvent socket ends d16 metric PN16 EPDM EPDM

Art.Nr. Ref.No	DN	d	VE Pack
123124	10	16	20,00
123125	15	20	20,00
123126	20	25	20,00
123127	25	32	15,00



Rückschlagventil S6 DN32 PVC grau PVC-U Klebemuffe d40 metrisch PN16 EPDM EPDM

Cone Check Valve S6 DN32 PVC grey PVC-U solvent socket ends d40 metric PN16 EPDM EPDM

Art.Nr. Ref.No	DN	d	VE Pack
126358	32	40	20,00
126359	40	50	20,00
126360	50	63	10,00



Rückschlagventil S4P DN65 PVC grau PVC-U Klebemuffe d75 metrisch PN16 EPDM EPDM

Cone Check Valve S4P DN65 PVC grey PVC-U solvent socket ends d75 metric PN16 EPDM EPDM

Art.Nr. Ref.No	DN	d	VE Pack
123128	65	75	4,00
123129	80	90	4,00
123130	80	110	4,00



Rückschlagventil SU 2W PVC metrisch PN10 EPDM, transparent

Cone Check Valve SU 2W PVC metric PN10 EPDM, transparent

Art.Nr. Ref.No	DN	d	VE Pack
75542	40	50	20,00
75543	50	63	10,00

Kegelrückschlagventil S6

Cone check valve S6



Rückschlagventil S6 DN32 PVC transparent PVC-U Klebemuffe d40 metrisch PN16 EPDM EPDM

Cone Check Valve S6 DN32 PVC transparent PVC-U solvent socket ends d40 metric PN16 EPDM EPDM

Art.Nr. Ref.No	DN	d	VE Pack
126364	32	40	20,00
126365	40	50	20,00
126366	50	63	10,00



Rückschlagventil S6 DN40 PVC transparent PVC-U Klebemuffe d50 metrisch PN10 FPM FPM

Cone Check Valve S6 DN40 PVC transparent PVC-U solvent socket ends d50 metric PN10 FPM FPM

Art.Nr. Ref.No	VE Pack
126368	20,00



Rückschlagventil S6 DN40 PVC grau PVC-U Klebemuffe d 1 1/2" JIS PN16 EPDM EPDM

Cone Check Valve S6 DN40 PVC grey PVC-U solvent socket ends d 1 1/2" JIS PN16 EPDM EPDM

Art.Nr. Ref.No	DN	d	VE Pack
126406	40	1 1/2	20,00
126407	50	2	10,00



Rückschlagventil S6 DN40 PVC grau PVC-U Klebemuffe d 1 1/2" ASTM PN16 EPDM EPDM

Cone Check Valve S6 DN40 PVC grey PVC-U solvent socket ends d 1 1/2" ASTM PN16 EPDM EPDM

Art.Nr. Ref.No	DN	d	VE Pack
126404	40	1 1/2	20,00
126405	50	2	10,00

Kegelrückschlagventil S6

Cone check valve S6



Rückschlagventil S6 mit R 3/4" Gewindeanschluss, DN32 PVC grau PVC-U Klebemuffe d40 metrisch PN16 EPDM EPDM Flachdichtung 25*16*3 beigelegt
Cone Check Valve S6 with R 3/4" connection, DN32 PVC grey PVC-U solvent socket ends d40 metric PN16 EPDM EPDM

Art.Nr. Ref.No	DN	d	VE Pack
126352	32	40	15,00
126353	40	50	20,00
126354	50	63	10,00



Rückschlagventil S6 mit R 3/4" Gewindeanschluss, DN32 PVC grau PVC-U Klebemuffe d40 metrisch PN16 FPM FPM
Cone Check Valve S6 with R 3/4" connection, DN32 PVC grey PVC-U solvent socket ends d40 metric PN16 FPM FPM

Art.Nr. Ref.No	DN	d	VE Pack
126355	32	40	15,00
126356	40	50	20,00
126357	50	63	10,00



Ablassventil Aussengewinde 3/4"
Drain valves male thread ends 3/4"

Art.Nr. Ref.No	VE Pack
73598	100,00



Ablassventil Schlauchtülle /AG 3/4"
Drain valves Hose nozzle /Male thread 3/4"

Art.Nr. Ref.No	VE Pack
70207	100,00

Kegelrückschlagventil S4

Cone check valve S4



Rückschlagventil S4 PVC grau PVC-U Klebemuffe metrisch PN16 EPDM EPDM
Cone Check Valve S4 PVC grey PVC-U solvent socket ends metric PN16 EPDM EPDM

Art.Nr. Ref.No	DN	d	VE Pack
121069	10	16	20,00
121088	15	20	20,00
121090	20	25	20,00
121092	25	32	15,00
121094	32	40	20,00
121041	40	50	10,00
121042	50	63	8,00
121098	65	75	4,00



Rückschlagventil S4 DN80 PVC grau PVC-U Klebemuffe d90 metrisch PN10 EPDM EPDM
Cone Check Valve S4 DN80 PVC grey PVC-U solvent socket ends d90 metric PN10 EPDM EPDM

Art.Nr. Ref.No	VE Pack
121043	1,00



Rückschlagventil S4 DN80 PVC grau PVC-U Klebemuffe d110 metrisch PN6 EPDM EPDM
Cone Check Valve S4 DN80 PVC grey PVC-U solvent socket ends d110 metric PN6 EPDM EPDM

Art.Nr. Ref.No	VE Pack
122291	1,00



Rückschlagventil S4 PVC grau PVC Klebestutzen da metrisch PN16 EPDM EPDM
Cone Check Valve S4 PVC grey PVC-U solvent spigot ends da metric PN16 EPDM EPDM

Code pc

Art.Nr. Ref.No	DN	d	VE Pack
121204	10	16	20,00
121210	20	25	20,00
121212	25	32	20,00
121214	32	40	15,00
121216	40	50	10,00
121206	50	63	8,00
121218	65	75	4,00

Kegelrückschlagventil S4

Cone check valve S4



Rückschlagventil S4 PVC grau PVC Klebestutzen da metrisch PN10 EPDM EPDM
Cone Check Valve S4 PVC grey PVC-U solvent spigot ends da metric PN10 EPDM EPDM

Art.Nr. Ref.No	DN	d	VE Pack
121208	15	20	20,00
121220	80	90	4,00



Rückschlagventil S4 PVC grau Gewindemuffe BSP PN16 EPDM EPDM
Cone Check Valve S4 PVC grey female thread socket BSP PN16 EPDM EPDM

Art.Nr. Ref.No	DN	d	VE Pack
121186	10	3/8	20,00
121188	15	1/2	20,00
121190	20	3/4	20,00
121192	25	1	15,00
121194	32	1 1/4	15,00
121196	40	1 1/2	10,00
121198	50	2	8,00
121200	65	2 1/2	4,00



Rückschlagventil S4 DN80 PVC grau Gewindemuffe R 3" BSP PN10 EPDM EPDM
Cone Check Valve S4 DN80 PVC grey female thread socket R 3" BSP PN10 EPDM EPDM

Art.Nr. Ref.No	DN	d	VE Pack
121202	80	90	1,00



Rückschlagventil S4 PVC grau PE-Schweißstutzen metrisch PN10 EPDM EPDM
Cone Check Valve S4 PVC grey PE fusion spigot metric PN10 EPDM EPDM

Art.Nr. Ref.No	DN	d	VE Pack
121168	10	16	20,00
121170	15	20	20,00
121172	20	25	20,00
121174	25	32	20,00
121176	32	40	15,00
121178	40	50	10,00
121180	50	63	8,00
121182	65	75	4,00

Kegelrückschlagventil S4

Cone check valve S4



Rückschlagventil S4 DN80 PVC grau PE-Schweißstutzen d90 metrisch PN6 EPDM EPDM

Cone Check Valve S4 DN80 PVC grey PE fusion spigot d90 metric PN6 EPDM EPDM

Art.Nr. Ref.No	VE Pack
121184	4,00



Rückschlagventil S4 Feder-teflonbeschichtet PVC grau PVC-U Klebemuffe metrisch PN16 EPDM EPDM

Cone Check Valve S4 Spring PTFE-coated PVC grey PVC-U solvent socket ends metric PN16 EPDM EPDM

Art.Nr. Ref.No	DN	d	VE Pack
121764	10	16	20,00
121765	15	20	20,00
121766	20	25	20,00
121767	25	32	15,00
121768	32	40	20,00
121769	40	50	10,00
121770	50	63	8,00
121771	65	75	4,00



Rückschlagventil S4 Feder-teflonbeschichtet DN80 PVC grau PVC-U Klebemuffe d90 metrisch PN10 EPDM EPDM

Cone Check Valve S4 Spring PTFE-coated DN80 PVC grey PVC-U solvent socket ends d90 metric PN10 EPDM EPDM

Art.Nr. Ref.No	VE Pack
121772	1,00



Rückschlagventil S4 Feder-teflonbeschichtet DN80 PVC grau PVC-U Klebemuffe d110 metrisch PN6 EPDM EPDM

Cone Check Valve S4 Spring PTFE-coated DN80 PVC grey PVC-U solvent socket ends d110 metric PN6 EPDM EPDM

Art.Nr. Ref.No	VE Pack
122721	1,00

Kegelrückschlagventil S4

Cone check valve S4



Rückschlagventil S4 Feder-teflonbeschichtet PVC grau PVC-U Klebemuffe metrisch PN16 FPM FPM

Cone Check Valve S4 Spring PTFE-coated PVC grey PVC-U solvent socket ends metric PN16 FPM FPM

Art.Nr. Ref.No	DN	d	VE Pack
122116	10	16	20,00
122117	15	20	20,00
122118	20	25	20,00
122119	25	32	15,00
122120	32	40	15,00
122121	40	50	10,00
122122	50	63	8,00
122123	65	75	4,00



Rückschlagventil S4 Feder-teflonbeschichtet DN80 PVC grau PVC-U Klebemuffe d90 metrisch PN10 FPM FPM

Cone Check Valve S4 Spring PTFE-coated DN80 PVC grey PVC-U solvent socket ends d90 metric PN10 FPM FPM

Art.Nr. Ref.No	VE Pack
122124	1,00



Rückschlagventil S4 Feder-teflonbeschichtet PVC grau PVC-U Klebemuffe metrisch

Cone Check Valve S4 Spring PTFE-coated PVC grey PVC-U solvent socket ends metric

Art.Nr. Ref.No	VE Pack
122720	1,00

Kegelrückschlagventil S4

Cone check valve S4



Rückschlagventil S4 PVC grau PVC-U Klebemuffe JIS PN16 EPDM EPDM
Cone Check Valve S4 PVC grey PVC-U solvent socket ends JIS PN16 EPDM EPDM

Art.Nr. Ref.No	DN	d	VE Pack
121072	10	3/8	20,00
121073	15	1/2	20,00
121074	20	3/4	20,00
121075	25	1	20,00
121076	32	1 1/4	15,00
121077	40	1 1/2	10,00
121078	50	2	8,00
121079	65	2 1/2	4,00



Rückschlagventil S4 DN80 PVC grau PVC-U Klebemuffe d 3" JIS PN10 EPDM EPDM
Cone Check Valve S4 DN80 PVC grey PVC-U solvent socket ends d 3" JIS PN10 EPDM EPDM

Art.Nr. Ref.No	VE Pack
121080	4,00



Rückschlagventil S4 PVC grau PVC-U Klebemuffe ASTM PN16 EPDM EPDM
Cone Check Valve S4 PVC grey PVC-U solvent socket ends ASTM PN16 EPDM EPDM

Art.Nr. Ref.No	DN	d	VE Pack
121940	10	3/8	20,00
120278	15	1/2	20,00
122076	20	3/4	20,00
122072	25	1	15,00
122080	32	1 1/4	20,00
121109	40	1 1/2	10,00
121110	50	2	8,00
121899	65	2 1/2	4,00

Kegelrückschlagventil S4

Cone check valve S4



Rückschlagventil S4 DN80 PVC grau PVC-U Klebemuffe d 3" ASTM PN10 EPDM EPDM

Cone Check Valve S4 DN80 PVC grey PVC-U solvent socket ends d 3" ASTM PN10 EPDM EPDM

Art.Nr. Ref.No	VE Pack
121900	1,00



Rückschlagventil S4 DN80 PVC grau PVC-U Klebemuffe d 4" ASTM PN6 EPDM EPDM

Cone Check Valve S4 DN80 PVC grey PVC-U solvent socket ends d 4" ASTM PN6 EPDM EPDM

Art.Nr. Ref.No	VE Pack
122805	1,00



Rückschlagventil S4 PVC grau PVC-U Klebemuffe JIS

Cone Check Valve S4 PVC grey PVC-U solvent socket ends JIS

Art.Nr. Ref.No	DN	d	VE Pack
121685	10	3/8	20,00
121686	15	1/2	20,00
121687	20	3/4	20,00
121688	25	1	20,00
121689	32	1 1/4	20,00
121690	40	1 1/2	10,00
121692	65	2 1/2	4,00



Rückschlagventil S4 DN80 PVC grau PVC-U Klebemuffe d 3" JIS PN10 FPM FPM

Cone Check Valve S4 DN80 PVC grey PVC-U solvent socket ends d 3" JIS PN10 FPM FPM

Art.Nr. Ref.No	VE Pack
121694	4,00

Kegelrückschlagventil S4

Cone check valve S4



Rückschlagventil S4 PVC grau PVC-U Klebemuffe ASTM
Cone Check Valve S4 PVC grey PVC-U solvent socket ends ASTM

Art.Nr. Ref.No	DN	d	VE Pack
122651	10	3/8	20,00
122652	15	1/2	20,00
122653	20	3/4	20,00
122654	25	1	20,00
122655	32	1 1/4	15,00
122656	40	1 1/2	10,00
122657	50	2	8,00
122658	65	2 1/2	4,00



Rückschlagventil S4 DN80 PVC grau PVC-U Klebemuffe d 3" ASTM PN10 FPM FPM
Cone Check Valve S4 DN80 PVC grey PVC-U solvent socket ends d 3" ASTM PN10 FPM FPM

Art.Nr. Ref.No	VE Pack
122648	1,00



Rückschlagventil S4 Feder-teflonbeschichtet PVC grau PVC-U Klebemuffe JIS PN16 EPDM EPDM
Cone Check Valve S4 Spring PTFE-coated PVC grey PVC-U solvent socket ends JIS PN16 EPDM EPDM

Art.Nr. Ref.No	DN	d	VE Pack
122972	10	3/8	20,00
122973	15	1/2	20,00
122974	20	3/4	20,00
122975	25	1	20,00
122976	32	1 1/4	15,00
122977	40	1 1/2	10,00
122978	50	2	8,00
122979	65	2 1/2	4,00

Kegelrückschlagventil S4

Cone check valve S4



Rückschlagventil S4 Feder-teflonbeschichtet DN80 PVC grau PVC-U Klebemuffe d 3" JIS PN10 EPDM EPDM

Cone Check Valve S4 Spring PTFE-coated DN80 PVC grey PVC-U solvent socket ends d 3" JIS PN10 EPDM EPDM

Art.Nr. Ref.No	VE Pack
122980	4,00



Rückschlagventil S4 Feder-teflonbeschichtet PVC grau PVC-U Klebemuffe ASTM PN16 EPDM EPDM

Cone Check Valve S4 Spring PTFE-coated PVC grey PVC-U solvent socket ends ASTM PN16 EPDM EPDM

Art.Nr. Ref.No	DN	d	VE Pack
121991	10	3/8	20,00
122196	15	1/2	20,00
122197	20	3/4	20,00
122198	25	1	15,00
122199	32	1 1/4	20,00
122200	40	1 1/2	10,00
121114	50	2	8,00
121759	65	2 1/2	4,00
121782	80	3	1,00



Rückschlagventil S4 Feder-teflonbeschichtet DN80 PVC grau PVC-U Klebemuffe d 4" ASTM PN6 EPDM EPDM

Cone Check Valve S4 Spring PTFE-coated DN80 PVC grey PVC-U solvent socket ends d 4" ASTM PN6 EPDM EPDM

Art.Nr. Ref.No	VE Pack
122981	1,00

Kegelrückschlagventil S4

Cone check valve S4



Rückschlagventil S4 Feder-teflonbeschichtet PVC grau PVC-U Klebemuffe JIS
Cone Check Valve S4 Spring PTFE-coated PVC grey PVC-U solvent socket ends JIS

Art.Nr. <i>Ref.No</i>	DN	d	VE <i>Pack</i>
124880	10	3/8	20,00
124881	15	1/2	20,00
124882	20	3/4	20,00
124883	25	1	20,00
124884	32	1 1/4	15,00
124885	40	1 1/2	10,00
124886	50	2	8,00
124887	65	2 1/2	4,00



**Rückschlagventil S4 Feder-teflonbeschichtet DN80 PVC grau PVC-U Klebemuffe d
3" JIS PN10 FPM FPM**
*Cone Check Valve S4 Spring PTFE-coated DN80 PVC grey PVC-U solvent socket ends d
3" JIS PN10 FPM FPM*

Art.Nr. <i>Ref.No</i>	VE <i>Pack</i>
124888	4,00

Schmutzfilter S4 Line stainer S4



Schmutzfilter S4 mit Kunststoffsieb Maschenweite 1,8 mm PVC transparent PVC-U Klebemuffe metrisch PN16 EPDM

Line strainer S4 with plastic screen mesh size 1,8 mm = 1800 micron PVC transparent PVC-U solvent socket ends metric PN16 EPDM

Art.Nr. Ref.No	DN	d	VE Pack
121701	10	16	20,00
121702	15	20	20,00
121703	20	25	20,00
121704	25	32	8,00
121705	32	40	20,00
121706	40	50	10,00
121707	50	63	8,00
121708	65	75	4,00



Schmutzfilter S4 mit Kunststoffsieb Maschenweite 1,8 mm PVC transparent PVC-U Klebemuffe metrisch PN10 EPDM

Line strainer S4 with plastic screen mesh size 1,8 mm = 1800 micron PVC transparent PVC-U solvent socket ends metric PN10 EPDM

Art.Nr. Ref.No	DN	d	VE Pack
121709	80	90	1,00
121710	80	110	8,00



Schmutzfilter S4 mit Kunststoffsieb Maschenweite 1,8 mm PVC transparent PVC Klebestutzen da metrisch EPDM

Line strainer S4 with plastic screen mesh size 1,8 mm = 1800 micron PVC transparent PVC-U solvent spigot ends da metric EPDM

Art.Nr. Ref.No	DN	d	VE Pack
121735	10	16	8,00
121736	15	20	8,00
121737	20	25	10,00
121738	25	32	8,00
121741	32	40	8,00
121748	40	50	8,00
121749	50	63	8,00
121750	65	75	8,00

Schmutzfilter S4

Line stainer S4



Schmutzfilter S4 mit Kunststoffsieb Maschenweite 1,8 mm DN80 PVC transparent PVC Klebestutzen da d90 metrisch PN10 EPDM

Line strainer S4 with plastic sreen mesh size 1,8 mm = 1800 micron DN80 PVC transparent PVC-U solvent spigot ends da d90 metric PN10 EPDM

Art.Nr. Ref.No	VE Pack
121751	8,00



Schmutzfilter S4 mit Kunststoffsieb Maschenweite 1,8 mm PVC transparent Gewindemuffe BSP PN16 EPDM

Line strainer S4 with plastic sreen mesh size 1,8 mm = 1800 micron PVC transparent female thread socket BSP PN16 EPDM

Art.Nr. Ref.No	DN	d	VE Pack
121721	10	3/8	8,00
121722	15	1/2	8,00
121723	20	3/4	8,00
121752	25	1	8,00
121754	32	1 1/4	8,00
121755	40	1 1/2	8,00
121756	50	2	8,00
121757	65	2 1/2	8,00



Schmutzfilter S4 mit Kunststoffsieb Maschenweite 1,8 mm DN80 PVC transparent Gewindemuffe R 3" BSP PN10 EPDM

Line strainer S4 with plastic sreen mesh size 1,8 mm = 1800 micron DN80 PVC transparent female thread socket R 3" BSP PN10 EPDM

Art.Nr. Ref.No	VE Pack
121758	8,00

Schmutzfilter S4

Line stainer S4



Schmutzfilter S4 für Edelstahlsieb PVC transparent PVC-U Klebemuffe metrisch EPDM

Line strainer S4 for stainless steel screen PVC transparent PVC-U solvent socket ends metric EPDM

Art.Nr. Ref.No	DN	d	VE Pack
124707	10	16	20,00
124708	15	20	20,00
124709	20	25	15,00
124710	25	32	15,00
124711	32	40	20,00
124712	40	50	10,00
124713	50	63	8,00
124714	65	75	4,00



Schmutzfilter S4 für Edelstahlsieb PVC transparent PVC-U Klebemuffe metrisch PN10 EPDM

Line strainer S4 for stainless steel screen PVC transparent PVC-U solvent socket ends metric PN10 EPDM

Art.Nr. Ref.No	DN	d	VE Pack
124715	80	90	1,00
124716	80	110	1,00



Schmutzfilter S4 für Edelstahlsieb PVC transparent Gewindemuffe BSP PN16 EPDM

Line strainer S4 for stainless steel screen PVC transparent female thread socket BSP PN16 EPDM

Art.Nr. Ref.No	DN	d	VE Pack
124717	10	3/8	20,00
124718	15	1/2	20,00
124719	20	3/4	15,00
124720	25	1	15,00
124721	32	1 1/4	20,00
124722	40	1 1/2	10,00
124723	50	2	8,00
124724	65	2 1/2	4,00

Schmutzfilter S4

Line stainer S4



Schmutzfilter S4 für Edelstahlsieb DN80 PVC transparent Gewindemuffe R 3" BSP PN10 EPDM 0,5 - 0,75 - 1,0 mm

Line strainer S4 for stainless steel screen DN80 PVC transparent female thread socket R 3" BSP PN10 EPDM

Art.Nr. Ref.No	VE Pack
124725	1,00



Edelstahl-Siebrohr für Schmutzfilter Maschenweite 0,5 mm Mat. 1.4301

Stainless steel strainer inser for line strainer Mesh size 0,5 mm = 500 micron Mat. 1.4301

Art.Nr. Ref.No	DN	d	VE Pack
50606	10/15	16/20	20,00
50608	20/25	25/32	15,00
50609	32	40	20,00
50610	40	50	10,00
50611	50	63	8,00
50612	65	75	4,00
50613	80	90	1,00



Edelstahl-Siebrohr für Schmutzfilter Maschenweite 1 mm Mat. 1.4301

Stainless steel strainer inser for line strainer Mesh size 1 mm = 1000 micron Mat. 1.4301

Art.Nr. Ref.No	DN	d	VE Pack
50622	10/15	16/20	20,00
50624	20/25	25/32	15,00
50625	32	40	20,00
50626	40	50	10,00
50627	50	63	8,00
50628	65	75	4,00
50629	80	90	1,00

Schmutzfilter S4 Line stainer S4



Schmutzfilter S4 mit Kunststoffsieb Maschenweite 1,8 mm PVC transparent PVC-U Klebemuffe JIS EPDM

Line strainer S4 with plastic sreen mesh size 1,8 mm = 1800 micron PVC transparent PVC-U solvent socket ends JIS EPDM

Art.Nr. Ref.No	DN	d	VE Pack
124677	10	3/8	20,00
124678	15	1/2	20,00
124679	20	3/4	15,00
124680	25	1	15,00
124681	32	1 1/4	20,00
124682	40	1 1/2	10,00
124683	50	2	8,00
124684	65	2 1/2	4,00



Schmutzfilter S4 mit Kunststoffsieb Maschenweite 1,8 mm DN80 PVC transparent PVC-U Klebemuffe d 3" JIS PN10 EPDM

Line strainer S4 with plastic sreen mesh size 1,8 mm = 1800 micron DN80 PVC transparent PVC-U solvent socket ends d 3" JIS PN10 EPDM

Art.Nr. Ref.No	VE Pack
124685	1,00



Schmutzfilter S4 mit Kunststoffsieb Maschenweite 1,8 mm PVC transparent PVC-U Klebemuffe ASTM

Line strainer S4 with plastic sreen mesh size 1,8 mm = 1800 micron PVC transparent PVC-U solvent socket ends ASTM

Art.Nr. Ref.No	DN	d	VE Pack
120557	10	3/8	20,00
120558	15	1/2	20,00
120559	20	3/4	20,00
120560	25	1	15,00
120561	32	1 1/4	20,00
120562	40	1 1/2	10,00
120563	50	2	8,00
120564	65	2 1/2	4,00

Schmutzfilter S4

Line stainer S4



Schmutzfilter S4 mit Kunststoffsieb Maschenweite 1,8 mm PVC transparent PVC-U Klebemuffe ASTM PN10 EPDM

Line strainer S4 with plastic screen mesh size 1,8 mm = 1800 micron PVC transparent PVC-U solvent socket ends ASTM PN10 EPDM

Art.Nr. Ref.No	DN	d	VE Pack
120565	80	3	1,00
120350	80	4	1,00



Schmutzfilter S4 für Edelstahlsieb PVC transparent EPDM

Line strainer S4 for stainless steel screen PVC transparent EPDM

Art.Nr. Ref.No	DN	d	VE Pack
124726	10	3/8	20,00
124727	15	1/2	20,00
124728	20	3/4	15,00
124729	25	1	15,00
124730	32	1 1/4	20,00
124731	40	1 1/2	10,00
124732	50	2	8,00
124733	65	2 1/2	4,00



Schmutzfilter S4 für Edelstahlsieb DN80 PVC transparent PVC-U Klebemuffe d 3" JIS PN10 EPDM 0,5 - 0,75 - 1,0 mm

Line strainer S4 for stainless steel screen DN80 PVC transparent PVC-U solvent socket ends d 3" JIS PN10 EPDM

Art.Nr. Ref.No	VE Pack
124734	1,00



Schmutzfilter S4 für Edelstahlsieb PVC transparent PVC-U Klebemuffe ASTM EPDM

Line strainer S4 for stainless steel screen PVC transparent PVC-U solvent socket ends ASTM EPDM

Art.Nr. Ref.No	DN	d	VE Pack
124735	10	3/8	20,00
124736	15	1/2	20,00
124737	20	3/4	15,00
124738	25	1	15,00
124739	32	1 1/4	20,00
124740	40	1 1/2	10,00
124741	50	2	8,00
124742	65	2 1/2	4,00

Schmutzfilter S4

Line stainer S4



Schmutzfilter S4 für Edelstahlsieb PVC transparent PVC-U Klebemuffe ASTM PN10 EPDM 0,5 - 0,75 - 1,0 mm

Line strainer S4 for stainless steel screen PVC transparent PVC-U solvent socket ends ASTM PN10 EPDM

Art.Nr. Ref.No	DN	d	VE Pack
124743	80	3	1,00
120102	80	4	10,00



Edelstahl-Siebrohr für Schmutzfilter Maschenweite 0,5 mm Mat. 1.4301

Stainless steel strainer inser for line strainer Mesh size 0,5 mm = 500 micron Mat. 1.4301

Art.Nr. Ref.No	DN	d	VE Pack
50606	10/15	16/20	20,00
50608	20/25	25/32	15,00
50609	32	40	20,00
50610	40	50	10,00
50611	50	63	8,00
50612	65	75	4,00
50613	80	90	1,00



Edelstahl-Siebrohr für Schmutzfilter Maschenweite 1 mm Mat. 1.4301

Stainless steel strainer inser for line strainer Mesh size 1 mm = 1000 micron Mat. 1.4301

Art.Nr. Ref.No	DN	d	VE Pack
50622	10/15	16/20	20,00
50624	20/25	25/32	15,00
50625	32	40	20,00
50626	40	50	10,00
50627	50	63	8,00
50628	65	75	4,00
50629	80	90	1,00

Be- und Entlüftungsventile

Aerating valves



Be- und Entlüftungsventil S4 PVC grau PVC-U Klebemuffe metrisch PN16 EPDM EPDM

Aerating Valve S4 PVC grey PVC-U solvent socket ends metric PN16 EPDM EPDM

Art.Nr. Ref.No	DN	d	VE Pack
121262	10	16	20,00
121264	15	20	20,00
121266	20	25	15,00
121268	25	32	15,00
121270	32	40	20,00
121272	40	50	10,00
121274	50	63	8,00
121276	65	75	4,00



Be- und Entlüftungsventil S4 DN80 PVC grau PVC-U Klebemuffe d90 metrisch PN10 EPDM EPDM

Aerating Valve S4 DN80 PVC grey PVC-U solvent socket ends d90 metric PN10 EPDM EPDM

Art.Nr. Ref.No	VE Pack
121278	5,00



Be- und Entlüftungsventil S4 DN80 PVC grau PVC-U Klebemuffe d110 metrisch PN6 EPDM EPDM

Aerating Valve S4 DN80 PVC grey PVC-U solvent socket ends d110 metric PN6 EPDM EPDM

Art.Nr. Ref.No	VE Pack
122391	1,00

Be- und Entlüftungsventile

Aerating valves



Be- und Entlüftungsventil S4 PVC grau Gewindemuffe BSP
Aerating Valve S4 PVC grey female thread socket BSP

Art.Nr. Ref.No	DN	d	VE Pack
121280	10	3/8	20,00
121282	15	1/2	20,00
121284	20	3/4	20,00
121286	25	1	15,00
121288	32	1 1/4	20,00
121290	40	1 1/2	10,00
121292	50	2	8,00
121294	65	2 1/2	4,00



Be- und Entlüftungsventil S4 DN80 PVC grau Gewindemuffe R 3" BSP PN10 EPDM EPDM
Aerating Valve S4 DN80 PVC grey female thread socket R 3" BSP PN10 EPDM EPDM

Art.Nr. Ref.No	VE Pack
121296	5,00



Be- und Entlüftungsventil S4 PVC grau PVC-U Klebemuffe ASTM PN16 EPDM EPDM
Aerating Valve S4 PVC grey PVC-U solvent socket ends ASTM PN16 EPDM EPDM

Art.Nr. Ref.No	DN	d	VE Pack
120303	10	3/8	20,00
122701	15	1/2	20,00
122130	20	3/4	20,00
122131	25	1	20,00
122132	32	1 1/4	15,00
122831	40	1 1/2	10,00
122011	50	2	8,00
120288	65	2 1/2	20,00

Fußventil S4

Foot valve S4



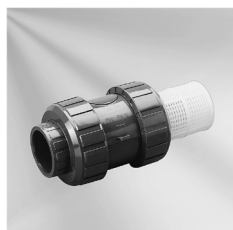
Fußventil S4 PVC grau PVC-U Klebemuffe metrisch PN16 EPDM EPDM
Foot valve S4 PVC grey PVC-U solvent socket ends metric PN16 EPDM EPDM

Art.Nr. Ref.No	DN	d	VE Pack
121323	10	16	20,00
121329	15	20	20,00
121335	20	25	15,00
121341	25	32	10,00
121347	32	40	20,00
121354	40	50	10,00
121361	50	63	8,00
121367	65	75	4,00



Fußventil S4 DN80 PVC grau PVC-U Klebemuffe d90 metrisch PN10 EPDM EPDM
Foot valve S4 DN80 PVC grey PVC-U solvent socket ends d90 metric PN10 EPDM EPDM

Art.Nr. Ref.No	VE Pack
121373	1,00



Fußventil S4 DN80 PVC grau PVC-U Klebemuffe d110 metrisch PN6 EPDM EPDM
Foot valve S4 DN80 PVC grey PVC-U solvent socket ends d110 metric PN6 EPDM EPDM

Art.Nr. Ref.No	VE Pack
122389	1,00

Fußventil S4

Foot valve S4



Fußventil S4 PVC grau Gewindemuffe BSP PN16 EPDM EPDM
Foot valve S4 PVC grey female thread socket BSP PN16 EPDM EPDM

Art.Nr. Ref.No	DN	d	VE Pack
121321	10	3/8	20,00
121327	15	1/2	20,00
121333	20	3/4	20,00
121339	25	1	20,00
121345	32	1 1/4	15,00
121351	40	1 1/2	10,00
121358	50	2	8,00
121365	65		4,00
121371	80	3	5,00



Fußventil S4 PVC grau PVC-U Klebemuffe ASTM PN16 EPDM EPDM
Foot valve S4 PVC grey PVC-U solvent socket ends ASTM PN16 EPDM EPDM

Art.Nr. Ref.No	DN	d	VE Pack
122873	10	3/8	20,00
122109	15	1/2	20,00
122110	20	3/4	15,00
122668	25	1	10,00
122129	32	1 1/4	20,00
121353	40	1 1/2	10,00
121360	50	2	8,00
122203	65	2 1/2	4,00



Fußventil S4 DN80 PVC grau PVC-U Klebemuffe d 3" ASTM PN10 EPDM EPDM
Foot valve S4 DN80 PVC grey PVC-U solvent socket ends d 3" ASTM PN10 EPDM EPDM

Art.Nr. Ref.No	VE Pack
122105	1,00

Fußventil S4

Foot valve S4



Fußventil S4 DN80 PVC grau PVC-U Klebemuffe d 4" ASTM PN6 EPDM EPDM
Foot valve S4 DN80 PVC grey PVC-U solvent socket ends d 4" ASTM PN6 EPDM EPDM

Art.Nr. Ref.No	VE Pack
122669	1,00



Fußventil S4 PVC grau PVC-U Klebemuffe JIS PN16 EPDM EPDM
Foot valve S4 PVC grey PVC-U solvent socket ends JIS PN16 EPDM EPDM

Art.Nr. Ref.No	DN	d	VE Pack
124659	10	3/8	20,00
124660	15	1/2	20,00
124661	20	3/4	15,00
124662	25	1	10,00
124663	32	1 1/4	20,00
124664	40	1 1/2	10,00
124665	50	2	8,00
124666	65	2 1/2	4,00
124667	80	3	1,00

Rückschlagklappe K4

Wafer type check valve K4



Rückschlagklappe K4 Federbelastet, opt. Stellungsa PVC grau Flanschanschluss DIN-ANSI-JIS PN10 EPDM

*Wafer type check valve K4 spring acted, optimal indicato PVC grey Flange-connection
DIN-ANSI-JIS PN10 EPDM*

Art.Nr. Ref.No	DN	d	VE Pack
125804	65	75-2 1/2"	1,00
125805	80	90-3"	1,00
125806	100	110-4"	1,00
125807	150	160 - 6"	1,00
125808	200	225 - 8"	1,00
125809	250	280 - 10"	1,00
125810	300	315 - 12"	1,00



Rückschlagklappe K4 Federbelastet, opt. Stellungsa PVC grau Flanschanschluss DIN-ANSI-JIS PN10 FPM

*Wafer type check valve K4 spring acted, optimal indicato PVC grey Flange-connection
DIN-ANSI-JIS PN10 FPM*

Art.Nr. Ref.No	DN	d	VE Pack
125811	65	75-2 1/2"	1,00
125812	80	90-3"	1,00
125813	100	110-4"	1,00
125814	150	160 - 6"	1,00
125815	200	225 - 8"	1,00
125816	250	280 - 10"	1,00
125817	300	315 - 12"	1,00



Rückschlagklappe K4 PVC grau Flanschanschluss DIN-ANSI-JIS PN10 EPDM

Wafer type check valve K4 PVC grey Flange-connection DIN-ANSI-JIS PN10 EPDM

Art.Nr. Ref.No	DN	d	VE Pack
125790	65	75-2 1/2"	1,00
125791	80	90-3"	1,00
125792	100	110-4"	1,00
125793	150	160 - 6"	1,00
125794	200	225 - 8"	1,00
125795	250	280 - 10"	1,00
125796	300	315 - 12"	1,00

Rückschlagklappe K4

Wafer type check valve K4



Rückschlagklappe K4 PVC grau Flanschanschluss DIN-ANSI-JIS PN10 FPM
Wafer type check valve K4 PVC grey Flange-connection DIN-ANSI-JIS PN10 FPM

Art.Nr. <i>Ref.No</i>	DN	d	VE <i>Pack</i>
125797	65	75-2 1/2"	1,00
125798	80	90-3"	1,00
125799	100	110-4"	1,00
125800	150	160 - 6"	1,00
125801	200	225 - 8"	1,00
125802	250	280 - 10"	1,00
125803	300	315 - 12"	1,00

Rückschlagklappe S4

Wafer type check valve S4



Rückschlagklappe S4 60 PVC grau DIN PN10 EPDM
Wafer type check valve S4 60 PVC grey DIN PN10 EPDM

Art.Nr. Ref.No	DN	d	VE Pack
70001	32	40-1 1/4"	1,00
70196	40	50-1 1/2"	1,00
70036	50	63-2"	1,00
70046	65	75-2 1/2"	1,00
70056	80	90-3"	1,00
70066	100	110-4"	1,00
70076	125	140 - 5"	1,00
70086	150	160 - 6"	1,00



Rückschlagklappe S4 60 PVC grau DIN PN6 EPDM
Wafer type check valve S4 60 PVC grey DIN PN6 EPDM

Art.Nr. Ref.No	DN	d	VE Pack
70096	200	225 - 8"	1,00
70106	250	280 - 10"	1,00
70116	300	315 - 12"	1,00
70281	350	400 - 14"	1,00
70478	400	450 - 16"	1,00
70504	500	560 - 20"	1,00



Rückschlagklappe S4 60 PVC grau DIN PN10 FPM
Wafer type check valve S4 60 PVC grey DIN PN10 FPM

Art.Nr. Ref.No	DN	d	VE Pack
70002	32	40-1 1/4"	1,00
70197	40	50-1 1/2"	1,00
70038	50	63-2"	1,00
70048	65	75-2 1/2"	1,00
70058	80	90-3"	1,00
70068	100	110-4"	1,00
70078	125	140 - 5"	1,00
70088	150	160 - 6"	1,00

Rückschlagklappe S4

Wafer type check valve S4



Rückschlagklappe S4 60 DN200 PVC grau 225 - 8" DIN PN6 FPM
Wafer type check valve S4 60 DN200 PVC grey 225 - 8" DIN PN6 FPM

Art.Nr. Ref.No	VE Pack
70098	1,00



Rückschlagklappe S4 60 PVC grau DIN PN6 FPM
Wafer type check valve S4 60 PVC grey DIN PN6 FPM

Art.Nr. Ref.No	DN	d	VE Pack
70118	300	315 - 12"	1,00
70147	350	400 - 14"	1,00
70914	400	450 - 16"	1,00
70626	500	560 - 20"	1,00



Rückschlagklappe S4 70 federbelastet PVC grau DIN PN10 EPDM
Wafer type check valve S4 70 spring acted PVC grey DIN PN10 EPDM

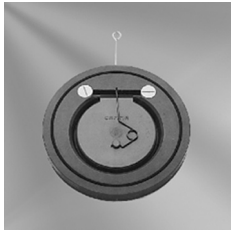
Art.Nr. Ref.No	DN	VE Pack
70003	32	1,00
70198	40	1,00
70037	50	1,00
70047	65	1,00
70057	80	1,00
70067	100	1,00
70077	125	1,00
70087	150	1,00

Rückschlagklappe S4 70 federbelastet PVC grau DIN PN6 EPDM
Wafer type check valve S4 70 spring acted PVC grey DIN PN6 EPDM

Art.Nr. Ref.No	DN	VE Pack
70097	200	1,00
70107	250	1,00
70117	300	1,00

Rückschlagklappe S4

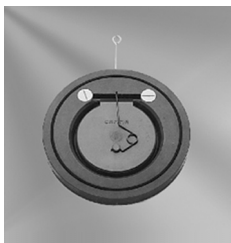
Wafer type check valve S4



Rückschlagklappe S4 70 federbelastet PVC grau DIN PN10 FPM

Wafer type check valve S4 70 spring acted PVC grey DIN PN10 FPM

Art.Nr. Ref.No	DN	VE Pack
70004	32	1,00
70199	40	1,00
70039	50	1,00
70049	65	1,00
70059	80	1,00
70069	100	1,00
70079	125	1,00
70089	150	1,00



Rückschlagklappe S4 70 federbelastet PVC grau DIN

Wafer type check valve S4 70 spring acted PVC grey DIN

Art.Nr. Ref.No	DN	VE Pack
70099	200	1,00
70109	250	1,00
70119	300	1,00



Rückschlagklappe S4 60 PVC grau ANSI EPDM

Wafer type check valve S4 60 PVC grey ANSI EPDM

Art.Nr. Ref.No	DN	d	VE Pack
122961	32	40-1 1/4"	1,00
122962	40	50-1 1/2"	1,00
122963	50	63-2"	1,00
121822	65	75-2 1/2"	1,00
122964	80	90-3"	1,00
122965	100	110-4"	1,00
122966	125	140 - 5"	1,00
122967	150	160 - 6"	1,00



Rückschlagklappe S4 60 DN200 PVC grau 225 - 8" ANSI PN6 EPDM

Wafer type check valve S4 60 DN200 PVC grey 225 - 8" ANSI PN6 EPDM

Art.Nr. Ref.No	VE Pack
122968	1,00

Durchflussmesser

Flow meter



Durchflussmesser M23 PSU-Messrohr PVC grau PVC-U Klebemuffe metrisch PN10 EPDM

Flowmeter M23 indicator tube PSU PVC grey PVC-U solvent socket ends metric PN10 EPDM

Art.Nr. Ref.No	DN	d	Durchfluss flow vange	VE Pack
73629	25	32	l/h 15-150	1,00
73630	25	32	l/h 50-500	1,00
73631	25	32	l/h 100-1000	1,00
73632	40	50	l/h 200-2000	1,00
73633	40	50	l/h 300-3000	1,00
73634	50	63	l/h 600-6000	1,00
73635	50	63	l/h 1200-12000	1,00
73636	65	75	l/h 2000-20000	1,00
73637	65	75	l/h 3000-30000	1,00
73638	65	75	l/h 8000-60000	1,00



Durchflussmesser M23 bistabil PSU-Messrohr PVC grau PVC-U Klebemuffe metrisch PN10 EPDM

Flowmeter M23 bistable indicator tube PSU PVC grey PVC-U solvent socket ends metric PN10 EPDM

Art.Nr. Ref.No	DN	d	Durchfluss flow vange	VE Pack
73639	25	32	l/h 15-150	1,00
73640	25	32	l/h 50-500	1,00
73641	25	32	l/h 100-1000	1,00
73642	40	50	l/h 200-2000	1,00
73643	40	50	l/h 300-3000	1,00
73644	50	63	l/h 600-6000	1,00
73645	50	63	l/h 1200-12000	1,00
73646	65	75	l/h 2000-20000	1,00
73647	65	75	l/h 3000-30000	1,00

Durchflussmesser

Flow meter



Durchflussmesser M23 PSU-Messrohr PVC grau PVC-U Klebemuffe ASTM PN10 EPDM

Flowmeter M23 indicator tube PSU PVC grey PVC-U solvent socket ends ASTM PN10 EPDM

Art.Nr. Ref.No	DN	d	Durchfluss flow vange	VE Pack
75350	25	32	l/h 15-150	10,00
75351	25	32	l/h 50-500	10,00
75352	25	32	l/h 100-1000	10,00
75353	40	50	l/h 200-2000	10,00
75354	40	50	l/h 300-3000	10,00
75355	50	63	l/h 600-6000	10,00
75356	50	63	l/h 1200-12000	10,00
75357	65	75	l/h 2000-20000	10,00
75358	40	50	l/h 3000-30000	10,00
75359	65	75	l/h 8000-60000	10,00



Durchflussmesser M23 bistabil PSU-Messrohr PVC grau PVC-U Klebemuffe ASTM PN10 EPDM

Flowmeter M23 bistable indicator tube PSU PVC grey PVC-U solvent socket ends ASTM PN10 EPDM

Art.Nr. Ref.No	DN	d	Durchfluss flow vange	VE Pack
75557	25	1	l/h 15-150	10,00
75558	25	32	l/h 50-500	10,00
75559	25	32	l/h 100-1000	10,00
75560	40	50	l/h 200-2000	10,00
75561	40	50	l/h 300-3000	10,00
75562	50	63	l/h 600-6000	10,00
75563	50	63	l/h 1200-12000	10,00
75564	65	75	l/h 2000-20000	10,00
75565	65	75	l/h 3000-30000	10,00

Grenzwertkontakt für Durchflussmesser M23 Z31

Limit contact for Flowmeter M23 Z31

Art.Nr. Ref.No	VE Pack
73660	1,00

Grenzwertkontakt für Durchflussmesser M23 Z32

Limit contact for Flowmeter M23 Z32

Art.Nr. Ref.No	VE Pack
73659	1,00

Spezialkleber und Reiniger

Solvent cement and cleaner

Klebstoff „TANGIT“ für PVC-U

Solvent Cement „TANGIT“ for PVC-U



Verpackung Packing	VE Pack	Art.Nr.
125g	30	20012

Klebstoff „TANGIT“

Solvent Cement „TANGIT“



VE Pack	VE Pack	Art.Nr.
250g	24	20018
500g	12	20019
1000g	8	20009

Klebstoff „TANGIT“ mit Pinsel

Solvent Cement „TANGIT“ with brush



VE Pack	VE Pack	Art.Nr.
250g	12	20200
500g	12	20208
1000g	6	20207

Reiniger „TANGIT“

Cleaner „TANGIT“



VE Pack	VE Pack	Art.Nr.
125ml	20	20017
1000ml	6	20010

Klebstoff GRIFFON UNI-100

Solvent Cement GRIFFON UNI-100



Verpackung Packing	VE Pack	Art.Nr.
250ml	24	20023
500ml	12	20024
1000ml	8	20025
5000ml	1	20026

Spezialkleber und Reiniger

Solvent cement and cleaner



Reiniger GRIFFON

Cleaner GRIFFON

Verpackung <i>Packing</i>	VE <i>Pack</i>	Art.Nr.
125ml	20	20041
500ml	12	20206
1000ml	12	20031

Klebstoff Saba S3

Solvent Cement Saba S3

Verpackung <i>Packing</i>	VE <i>Pack</i>	Art.Nr.
1000ml	12	20021
5000ml	1	20022



CLEAN WATER GROUP

